

Cadenza CW-C18

100 x 4.6 mm

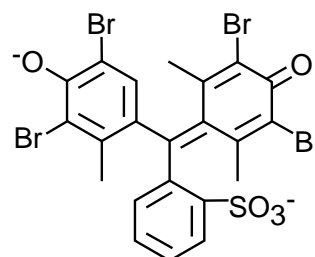
HPLC COLUMN APPLICATION

Bromocresol Green (pH indicator)

ブロモクレゾールグリーン (pH指示薬)

Neutral pH Condition

mAU



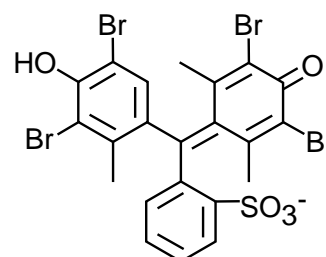
bromocresol green (bcg²⁻)
(solution color : blue)



Cadenza CW-C18, 100 x 4.6 mm
 A: 100mM HCOONH₄ / ACN = 90 / 10
 B: 100mM HCOONH₄ / ACN = 10 / 90
 0-70%B (0-15min)
 1.0mL/min (11MPa), 37°C, 615nm
 10μL (0.02mg/mL, 100mM HCOONH₄)

Acidic pH Condition

mAU



bromocresol green (Hbcg⁻)
(solution color : yellow)



Cadenza CW-C18, 100 x 4.6 mm
 A: water / ACN / HCOOH = 90 / 10 / 0.5
 B: water / ACN / HCOOH = 10 / 90 / 0.5
 15-100%B (0-15min)
 1.0mL/min (11MPa), 37°C, 450nm
 10μL (0.21mg/mL, water / HCOOH = 100 / 1)