

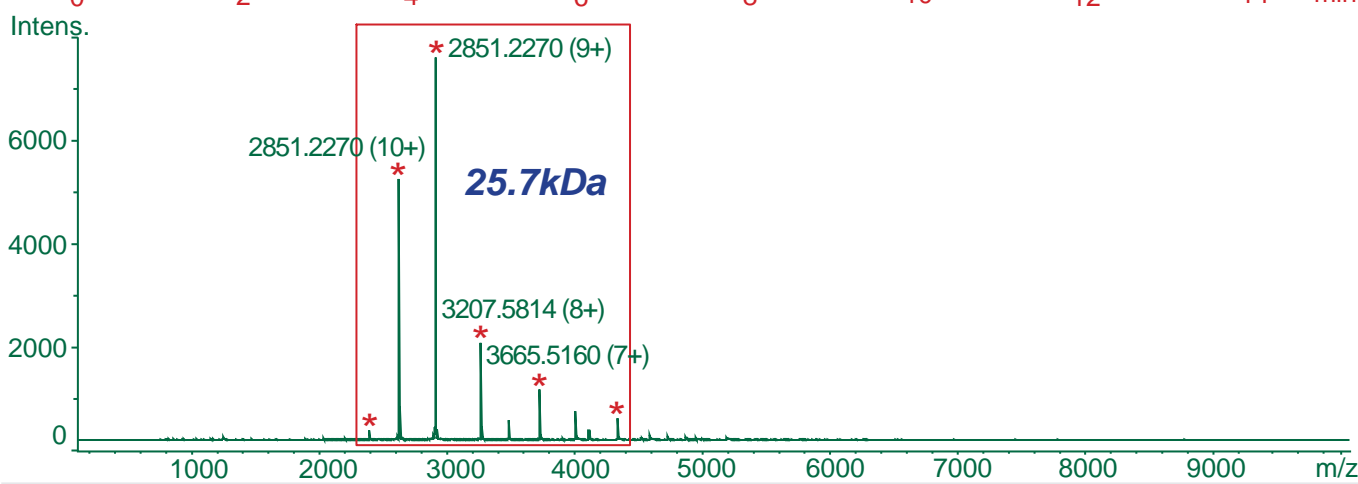
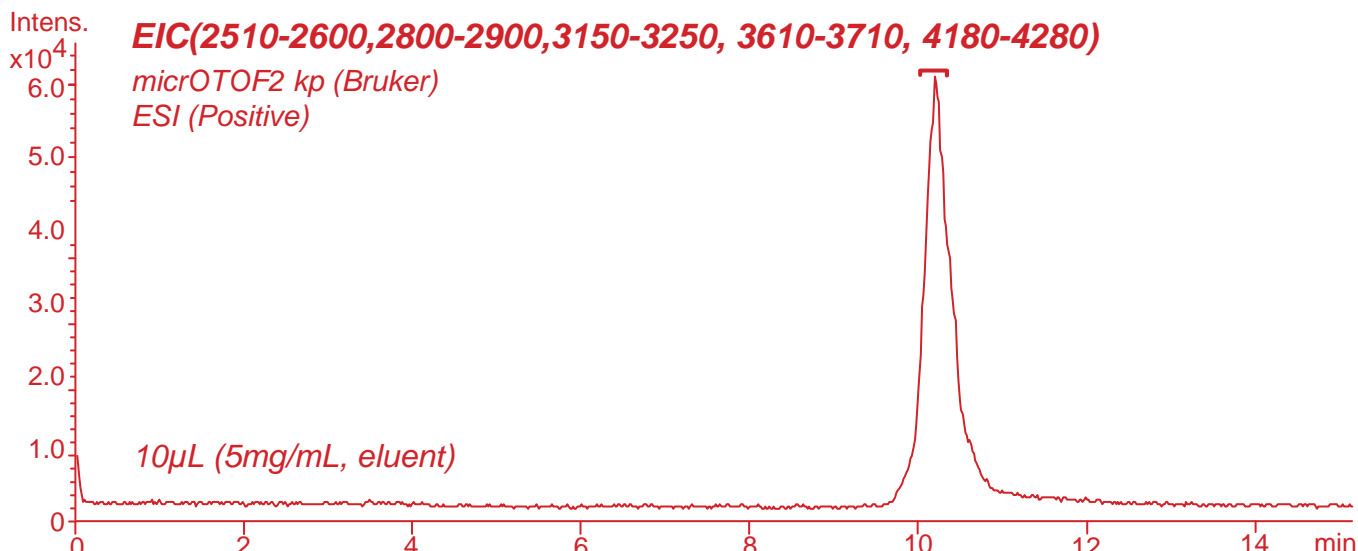
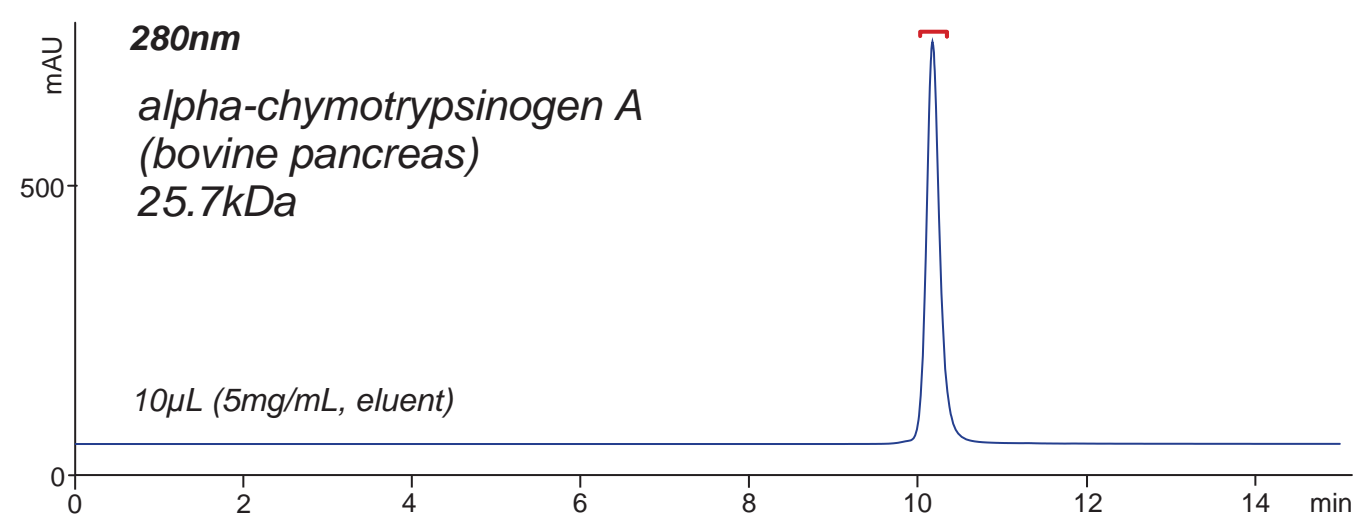
**Intrada SEC**

250 x 4.6 mm

**HPLC COLUMN APPLICATION**

**SEC-MS:Alpha-chymotrypsinogen A**

-キモトリプシノーゲンのSEC-MS分析



*Intrada SEC, 250 x 4.6 mm*  
 100mM ammonium formate  
 0.3mL/min (6MPa), 37°C