

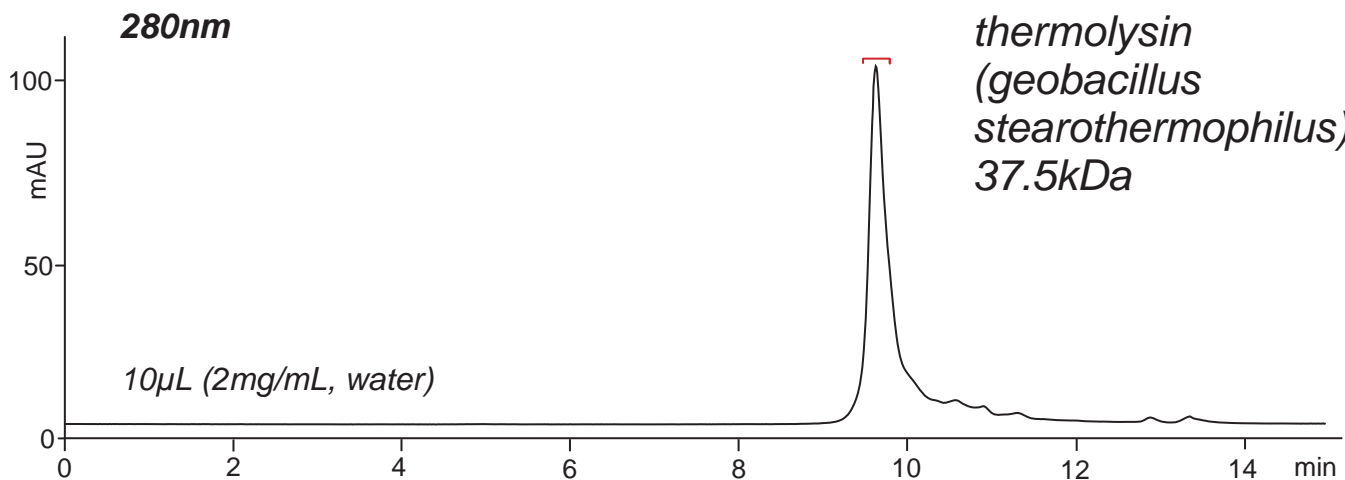
**Intrada SEC**

250 x 4.6 mm

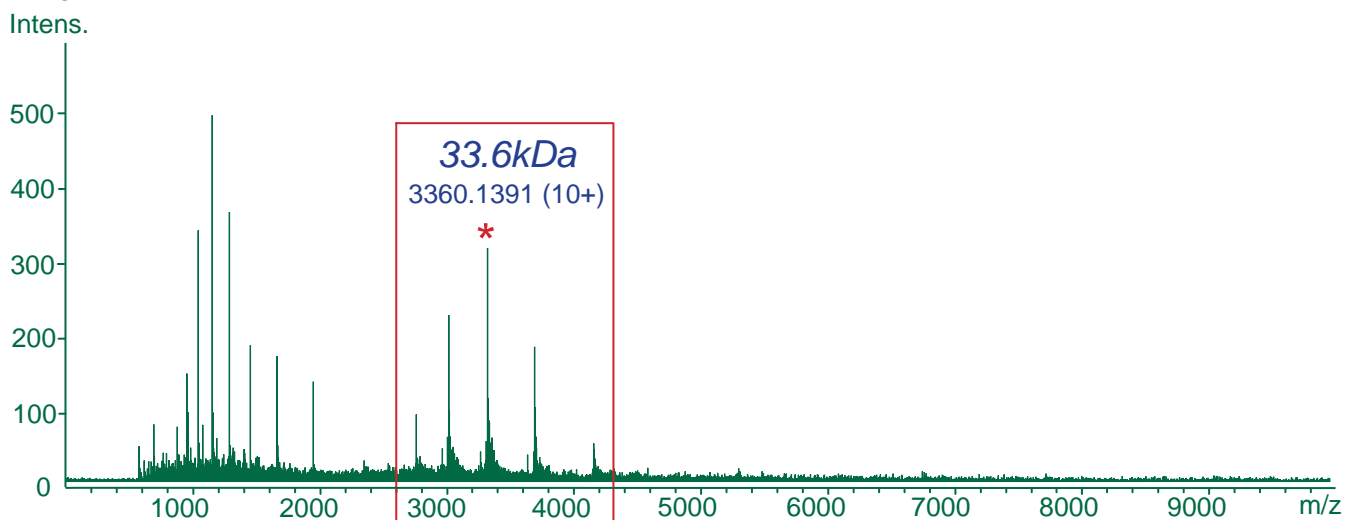
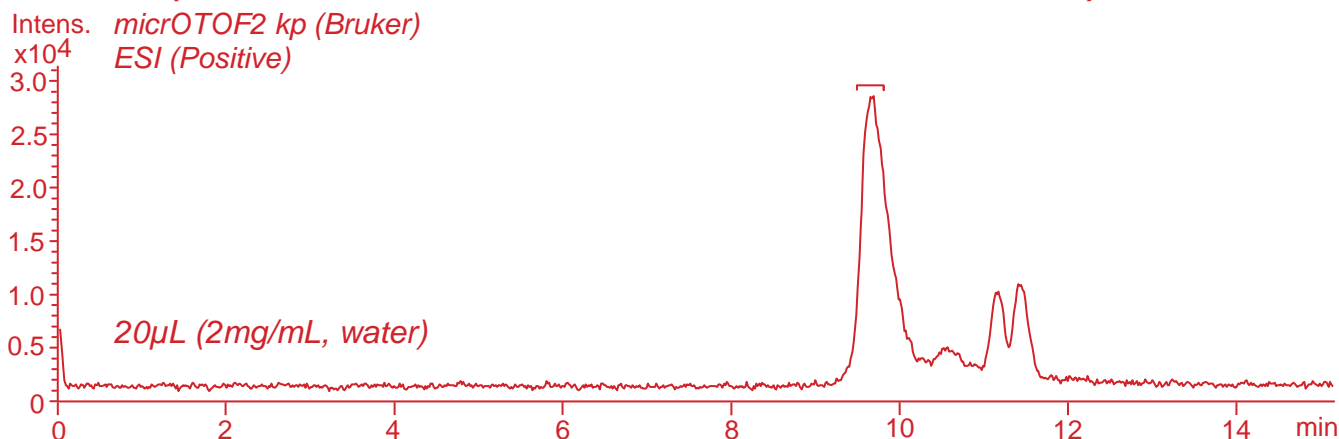
**HPLC COLUMN APPLICATION**

**SEC-MS:Thermolysin**

サーモリシンのSEC - MS分析



**EIC(2750-2850, 3000-3100, 3300-3400, 3680-3780, 4150-4250)**



Intrada SEC, 250 x 4.6 mm  
100mM ammonium formate  
0.3mL/min (6MPa), 37°C