

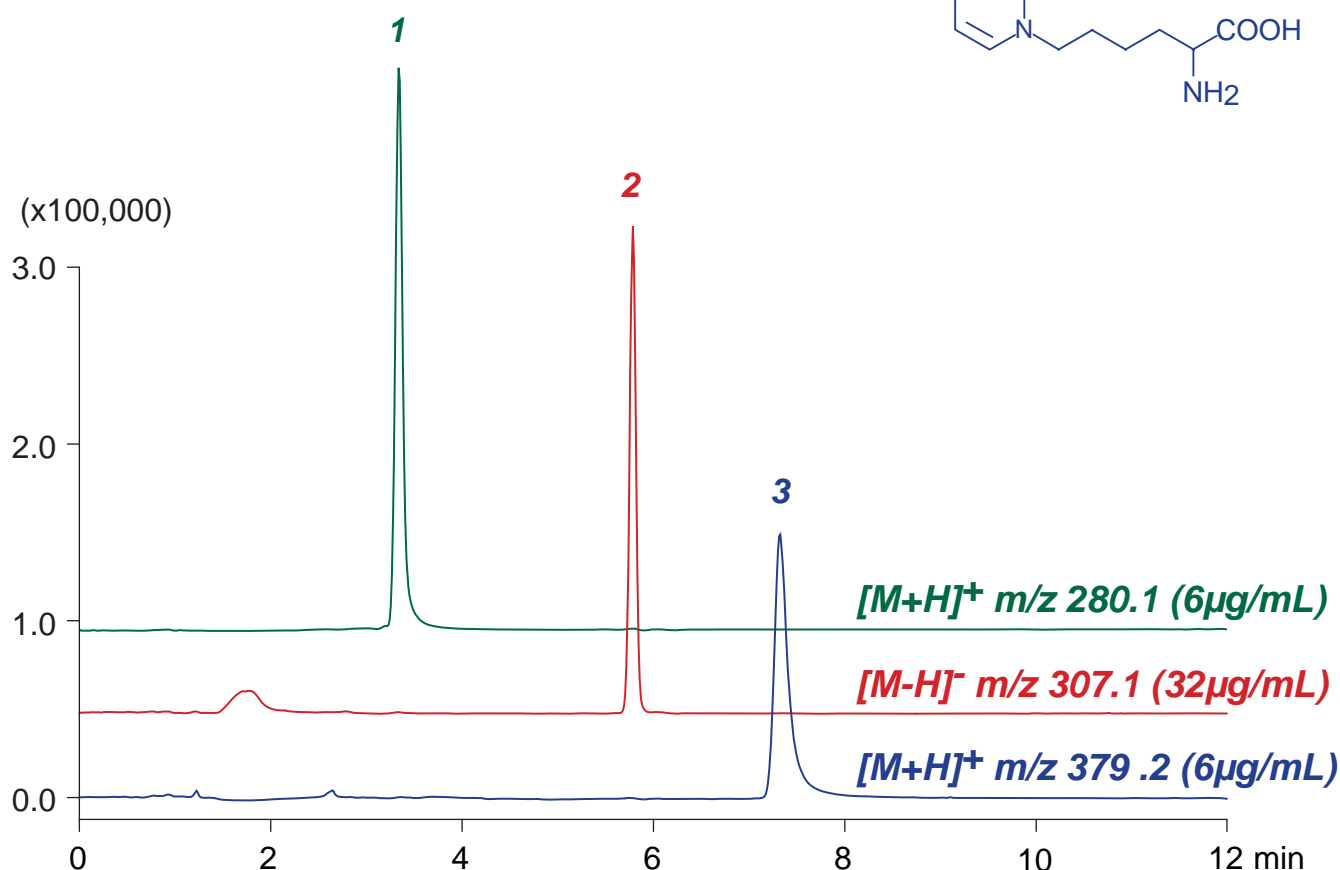
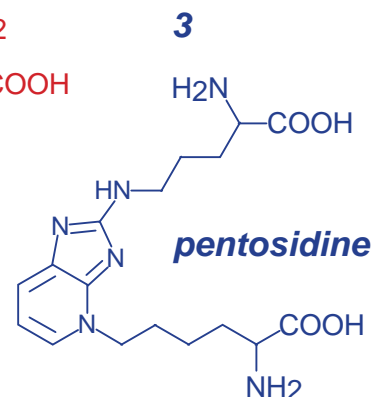
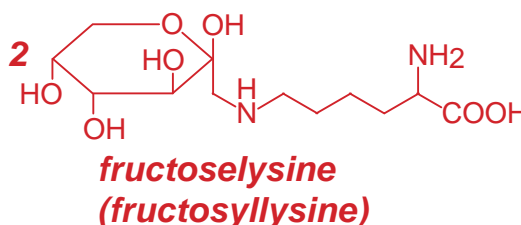
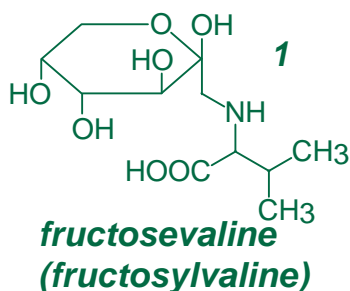
**Intrada Amino Acid**

100 x 3 mm

Application

**LC-MS: HbA1c and AGEs related amadori compounds**

アマドリ化合物 (ヘモグロビン A1cおよび AGEs関連) の LCMS分析



*Intrada Amino Acid, 100 x 3 mm*

*A: acetonitrile / formic acid = 100 / 0.1*

*B: acetonitrile / 100mM ammonium formate = 20 / 80*

*10%B (0-1min), 10-100%B (1-4min), 100%B (4-12min)*

*0.6mL/min (4MPa), 37°C, MS (ESI, SIM)*

*5μL (6-32μg/mL, 1% HCOOH)*