

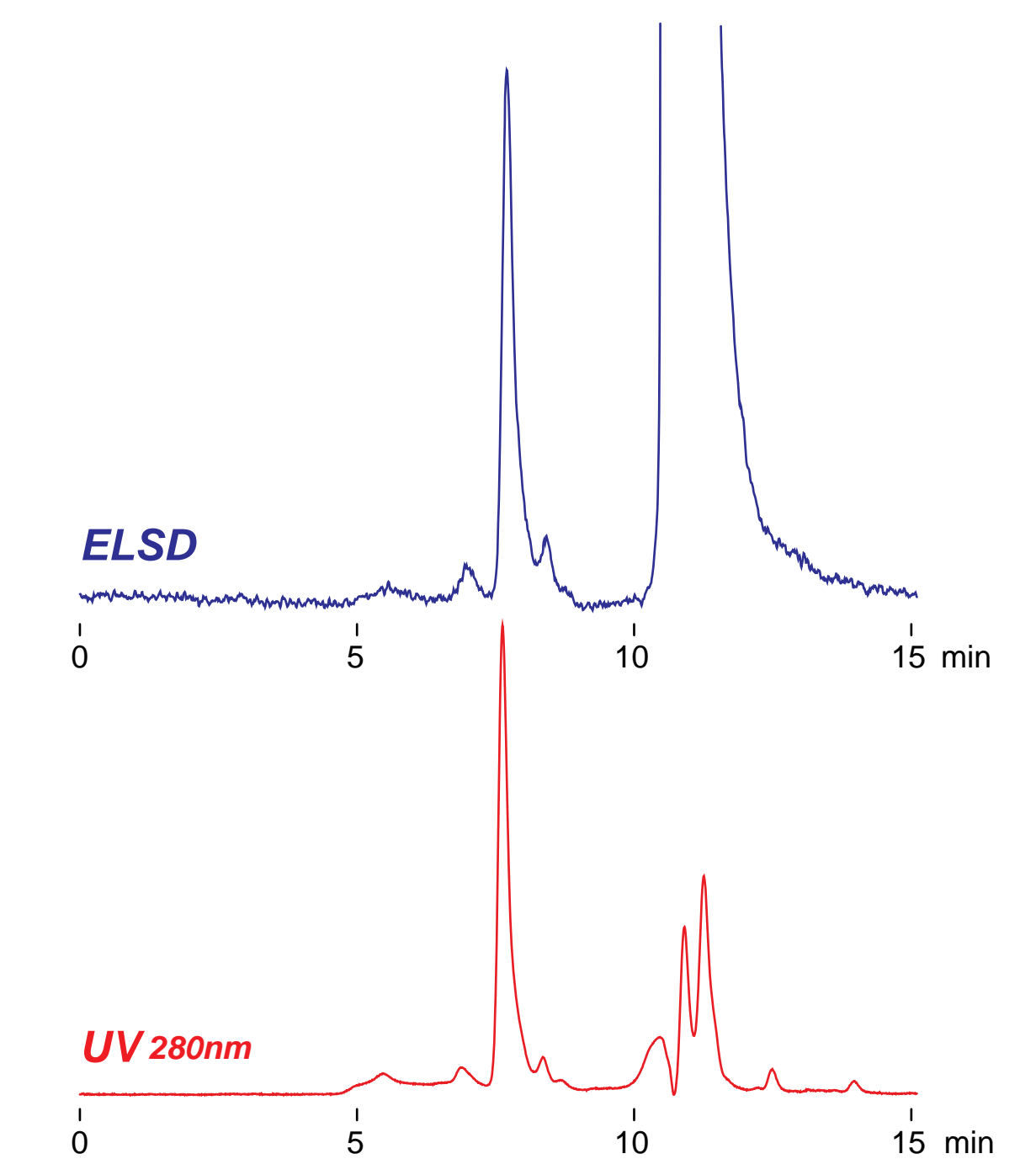
**Intrada SEC**

250 x 4.6 mm

Application

**SEC: mAb (Anti Derf II)**

モノクローナル抗体 (Anti Derf II)のSEC分離



*Intrada SEC, 250 x 4.6 mm  
100mM ammonium formate  
0.3 mL/min (5MPa), 37°C  
10 µL, (0.4mg/mL)*