

Intrada SEC

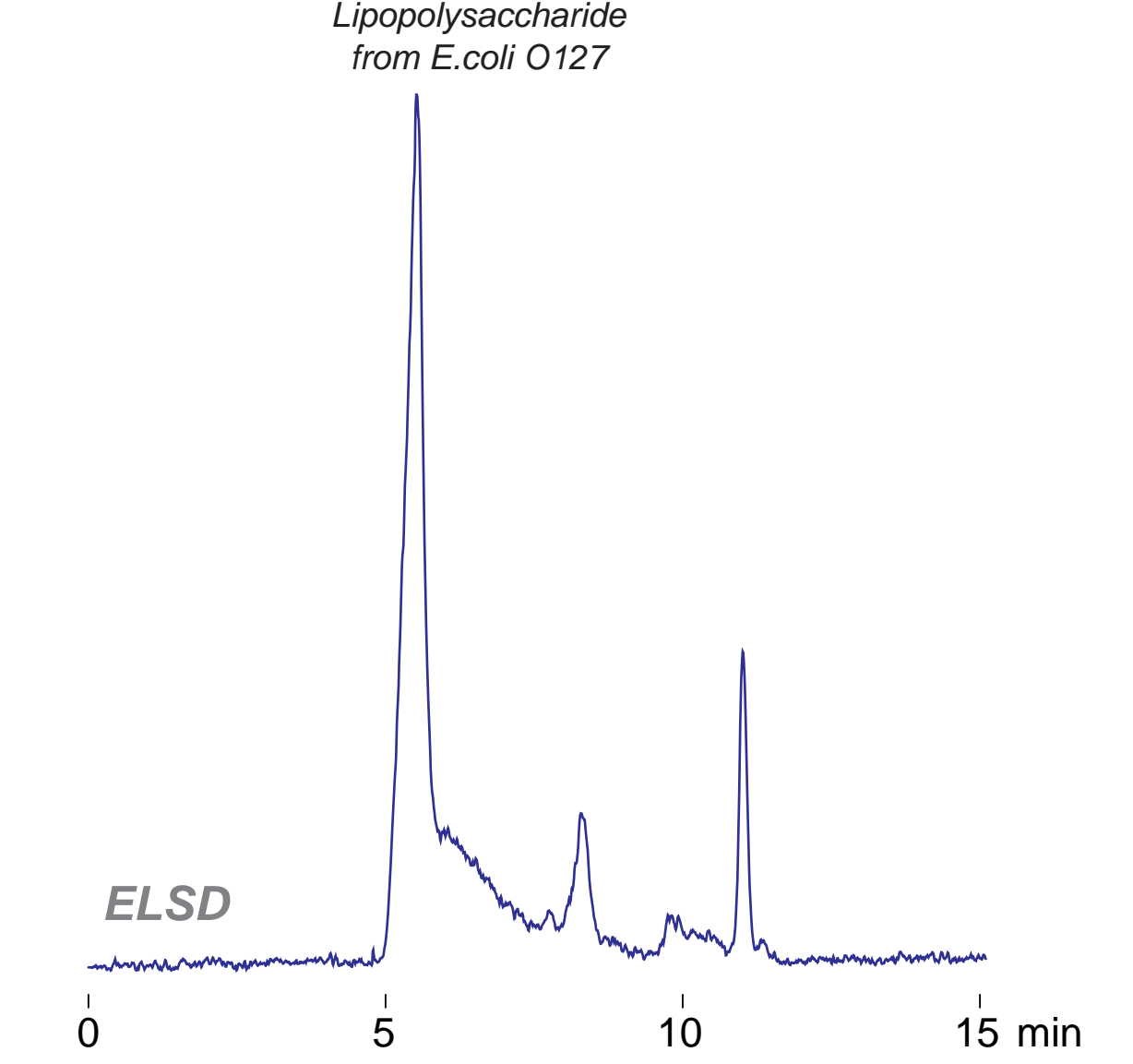
250 x 4.6 mm

Application

SEC: Lipopolysaccharide (LPS)

リポ多糖(大腸菌O127由来)のSEC分離

*Lipopolysaccharide
from E.coli O127*



*Intrada SEC, 250 x 4.6 mm
100mM ammonium formate
0.3 mL/min (5MPa), 37°C
20 µL (1mg/mL, eluent)*