

Intrada SEC

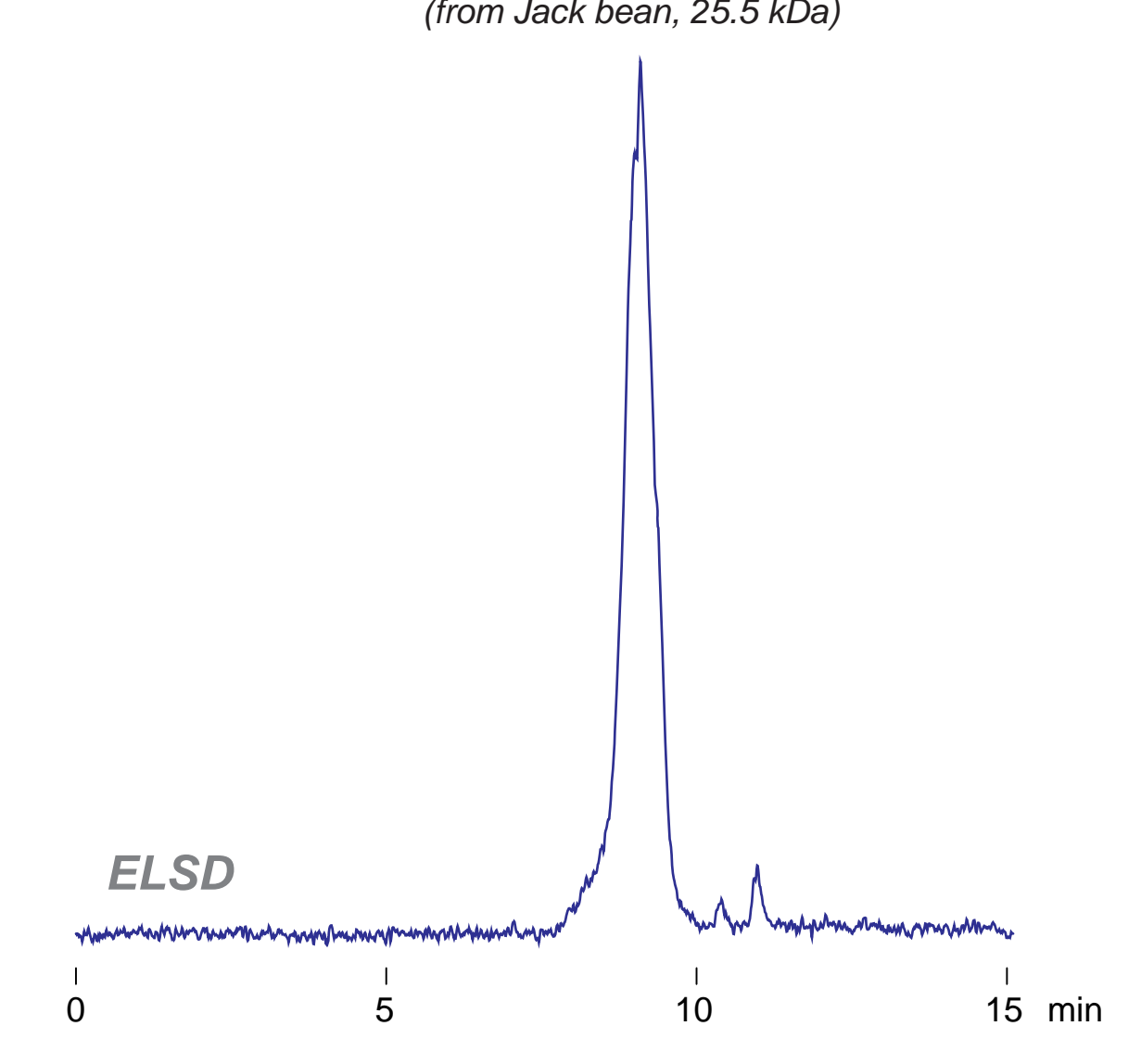
250 x 4.6 mm

Application

SEC: Lectin (Concanavalin A)

レクチン(コンカナバリンA)のSEC分離

Concanavalin A
(from Jack bean, 25.5 kDa)



Intrada SEC, 250 x 4.6 mm
100mM ammonium formate
0.3 mL/min (5MPa), 37°C
10 µL (1mg/mL, eluent)