

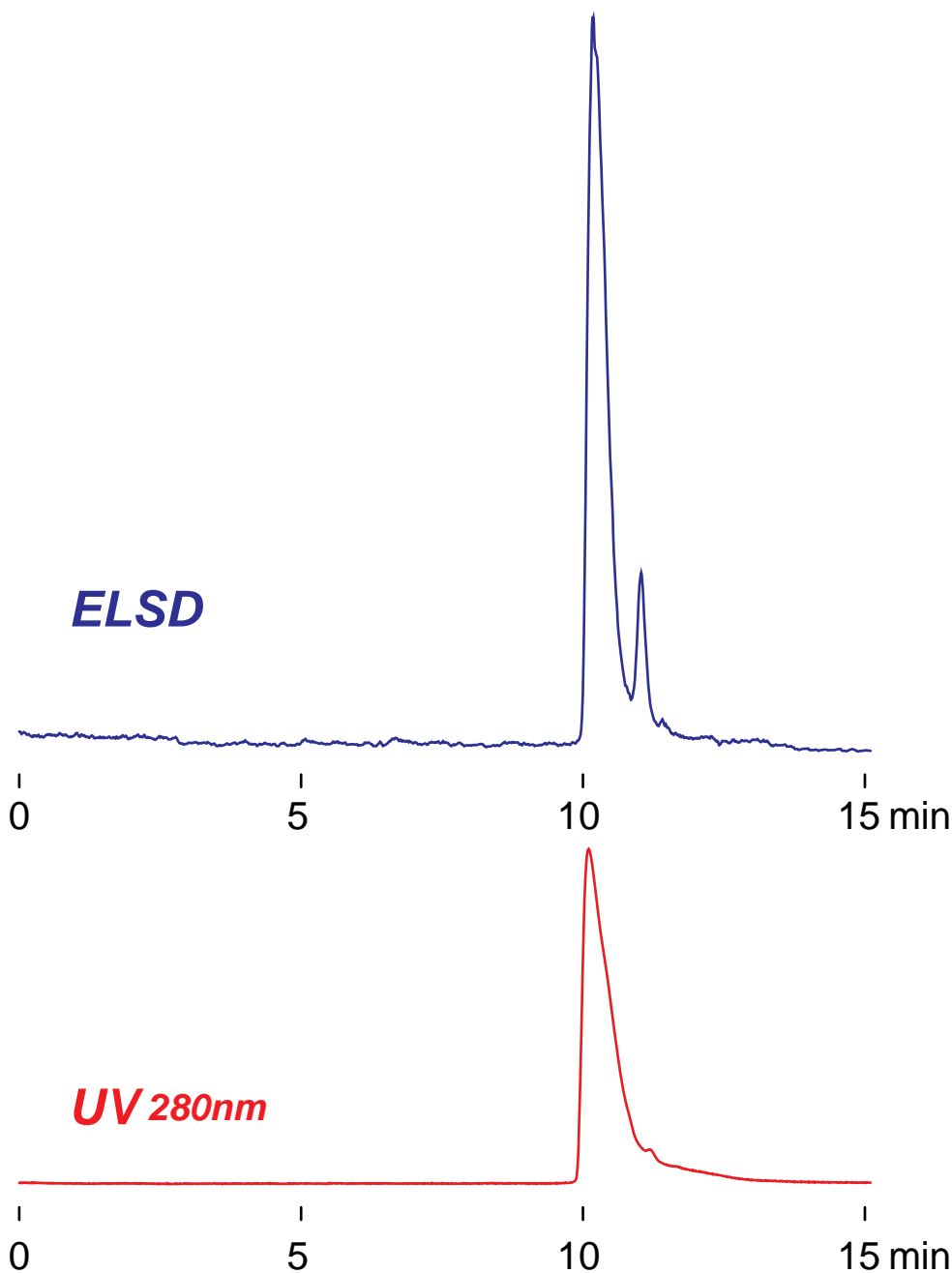
**Intrada SEC**

250 x 4.6 mm

Application

SEC: Insulin, from bovine pancreas

インスリンのSEC分離



Intrada SEC, 250 x 4.6 mm  
100mM ammonium formate  
0.3 mL/min (5MPa), 37°C  
5 µL (1mg/mL, 0.5% formic acid)