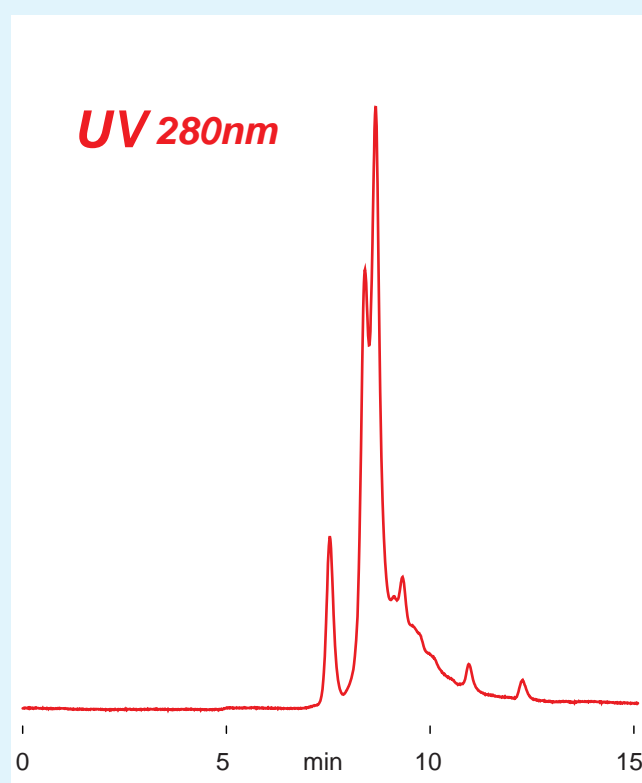
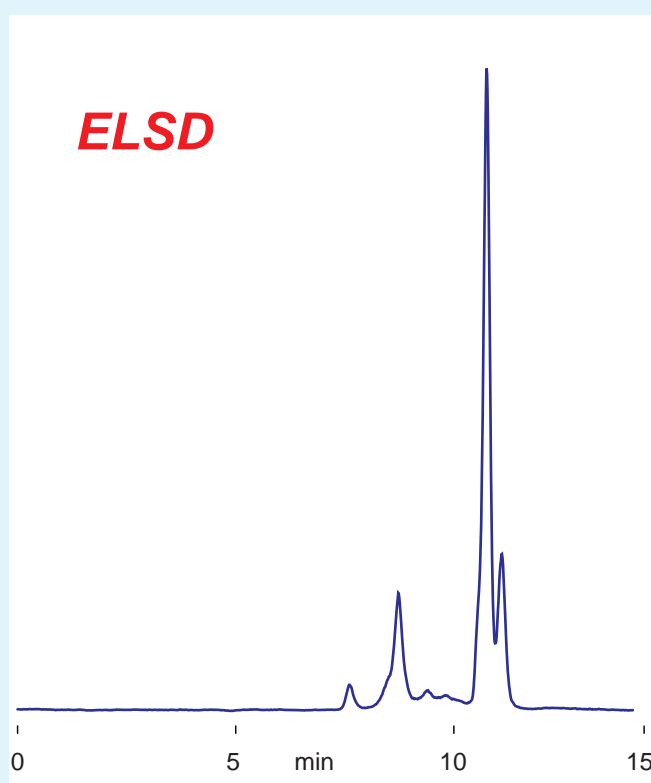


**Intrada SEC**

250 x 4.6 mm

Application

**SEC:  $\beta$ -Glucosidase** $\beta$ -グルコシダーゼのSEC分離**SEC:  $\beta$ -Glucosidase****Intrada SEC** **$\beta$ -Glucosidase (Almond)**

891

*Intrada SEC, 250 x 4.6 mm  
100mM ammonium formate  
0.3 mL/min (5MPa), 37°C  
20  $\mu$ L (1mg/mL, eluent)*