

**Intrada SEC**

250 x 4.6 mm

Application

**SEC: Human serum**

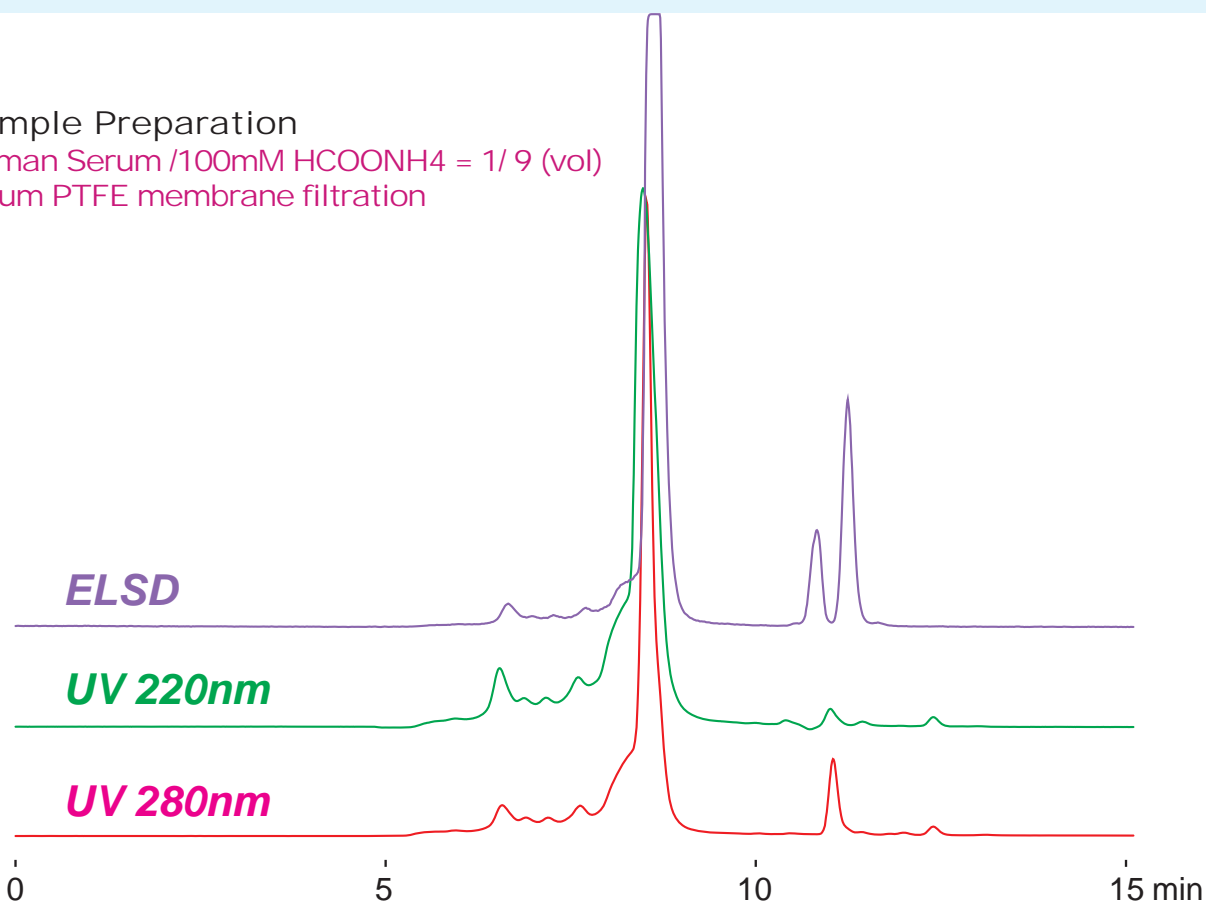
ヒト血清のSEC分離

**SEC: Human Serum** **Intrada SEC**

Sample Preparation

Human Serum /100mM HCOONH<sub>4</sub> = 1/ 9 (vol)

0.2um PTFE membrane filtration



872

*Intrada SEC, 250 x 4.6 mm  
100mM ammonium formate  
0.3 mL/min (5MPa), 37°C  
10 µL*