

Intrada SEC

250 x 4.6 mm

Application

SEC: Hemoglobin

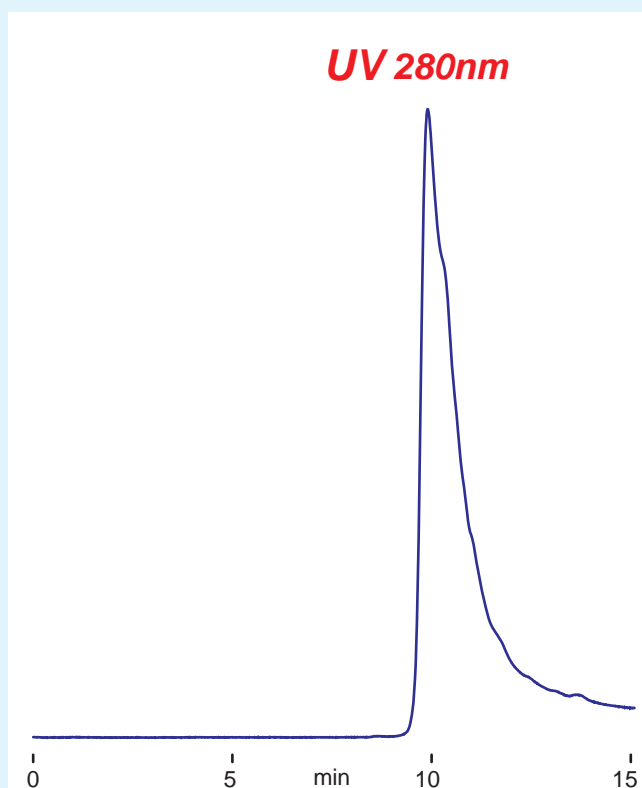
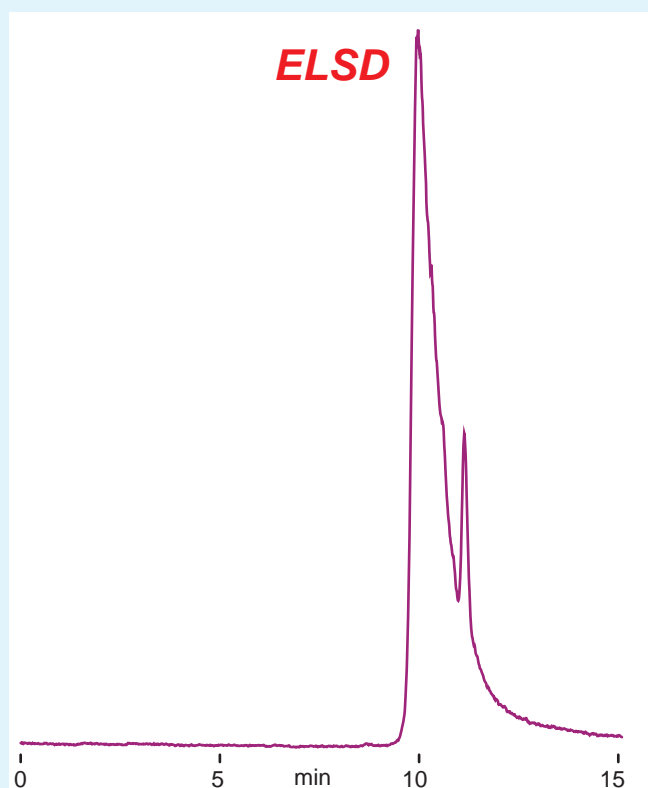
ヘモグロビンのSEC分離



SEC: Hemoglobin

Intrada SEC

hemoglobin (human)



870

*Intrada SEC, 250x4.6mm
100mM ammonium formate
0.3mL/min (5MPa), 37 °C
20 µL (2.5mg/mL, 0.1% HCOOH)*