

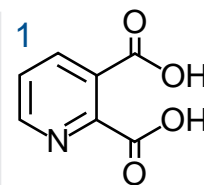
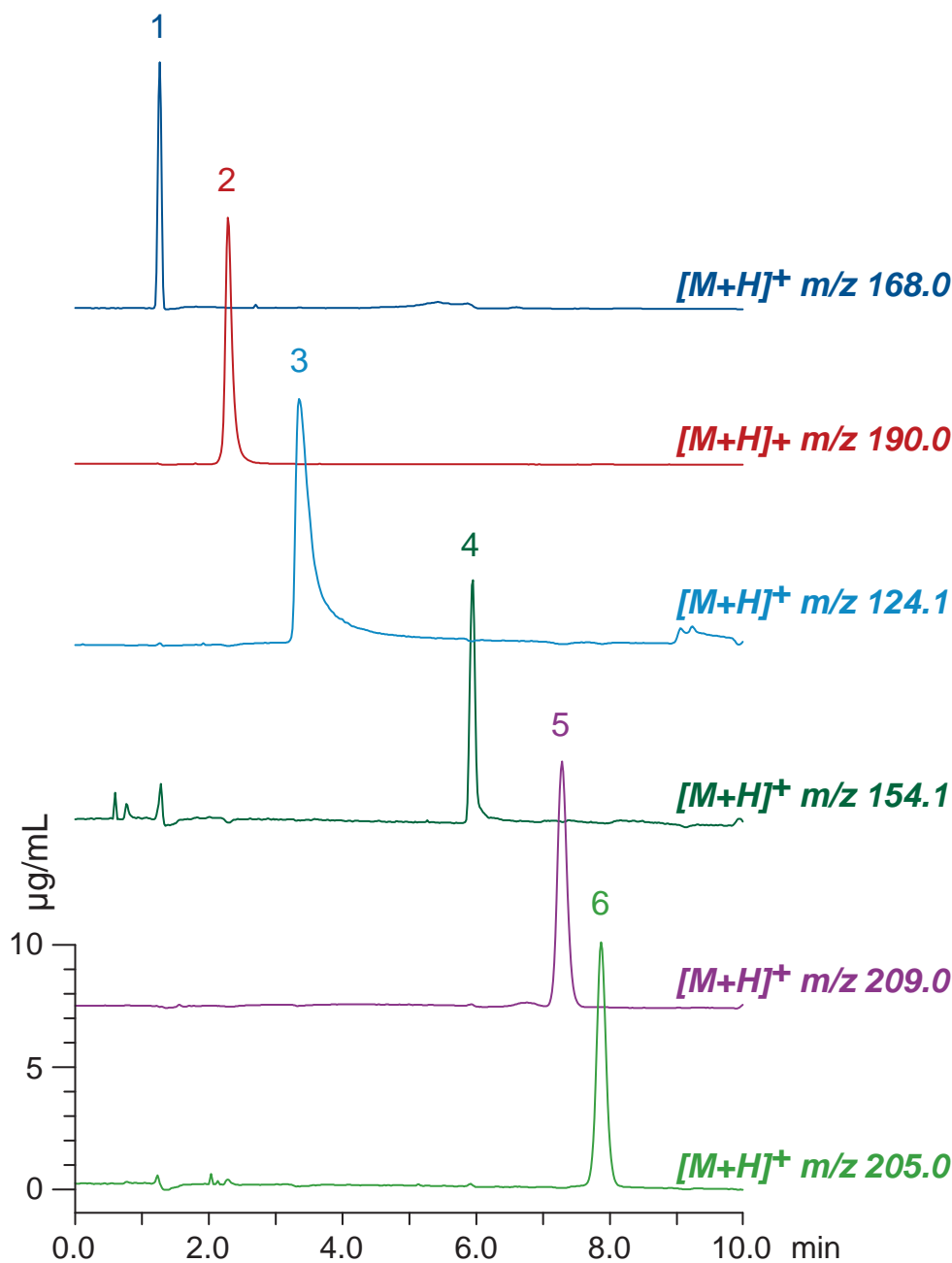
**Intrada** Amino Acid

100 x 3 mm

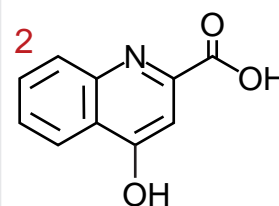
Application

**LC-MS: Kynurenine metabolism pathway**

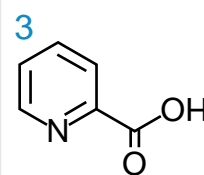
キヌレニン代謝経路のLC-MS分析



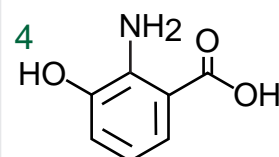
**quinolinic acid**



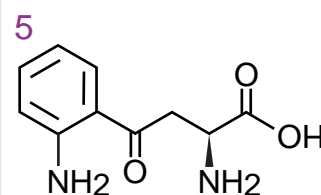
**kynurenic acid**



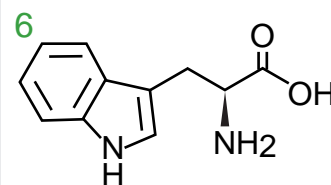
**picolinic acid**



**3-hydroxyanthranilic acid**



**L-kynurenine**



**L-tryptophan**

*Intrada* Amino Acid, 100 x 3 mm

A: methanol / water / formic acid = 60 / 40 / 0.5

B: 100mM ammonium formate

0-100%B (0-10 min)

0.4 mL/min (9 MPa), 37°C, 10 µL (10µg/mL, 1% formic acid)

Single Quad. MS (ESI)