

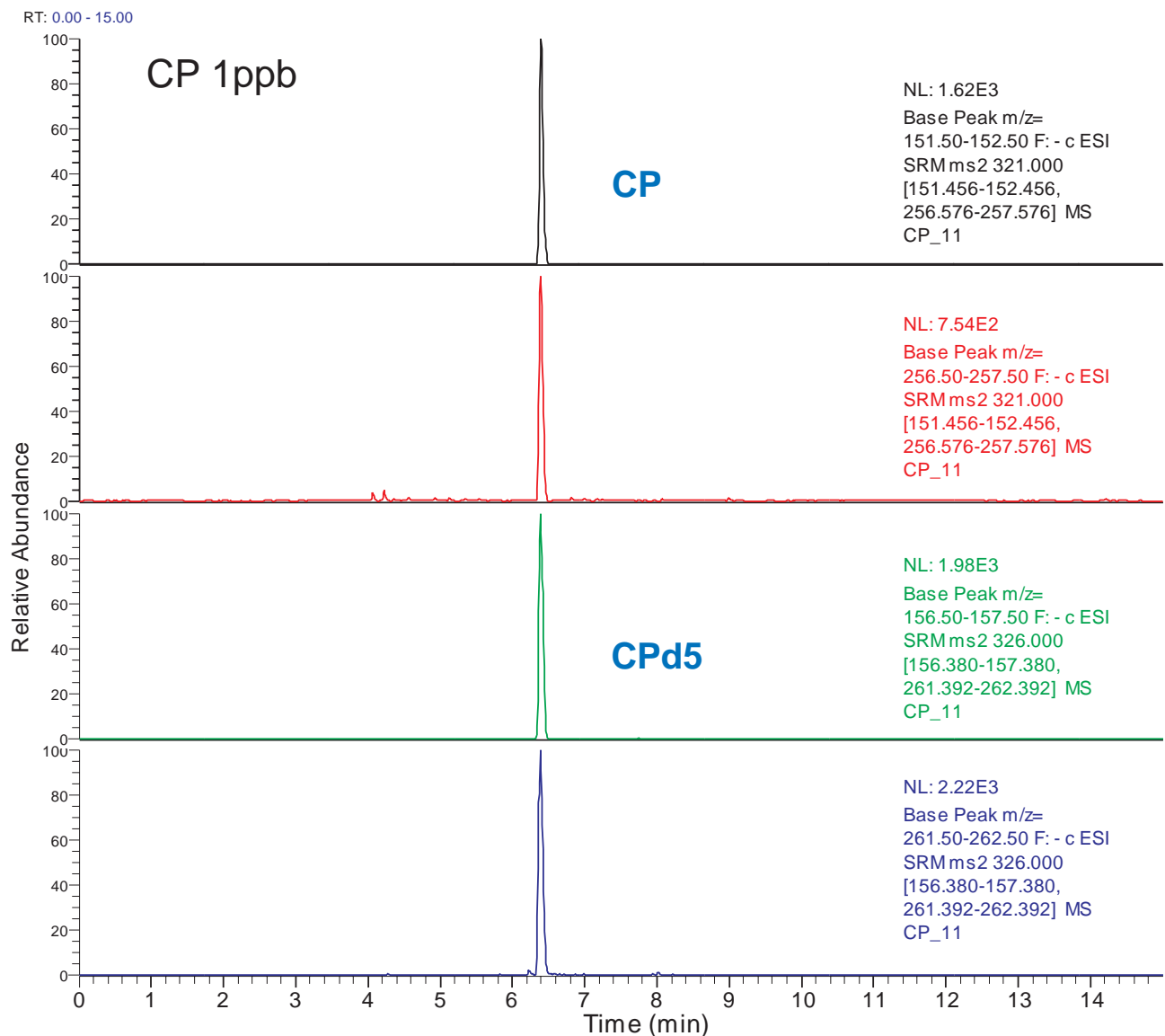
Cadenza CD-C18

150 x 2 mm

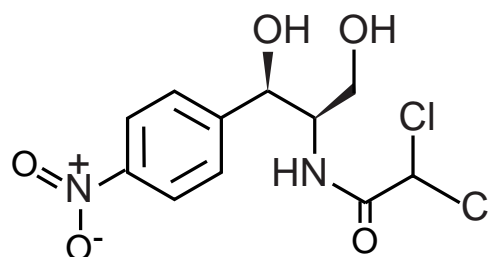
Application

LC-MS/MS analysis of chloramphenicol (CP)

クロラムフェニコール (CP) のLC-MS/MS分析(告示試験法)



Cadenza CD-C18, 150 x 2 mm
10mM HCOONH4 / ACN = 70 / 30
Runtime 15min
0.2 mL/min, 40°C
5uL (CP 1.0ppb, IS 5.0ppb)
ESI, SRM, negative



chloramphenicol (CP)

Courtesy of MAEDA Naoyuki, ASSOCIATION OF MEAT SCIENCE & TECHNOLOGY INSTITUTE, JAPAN