

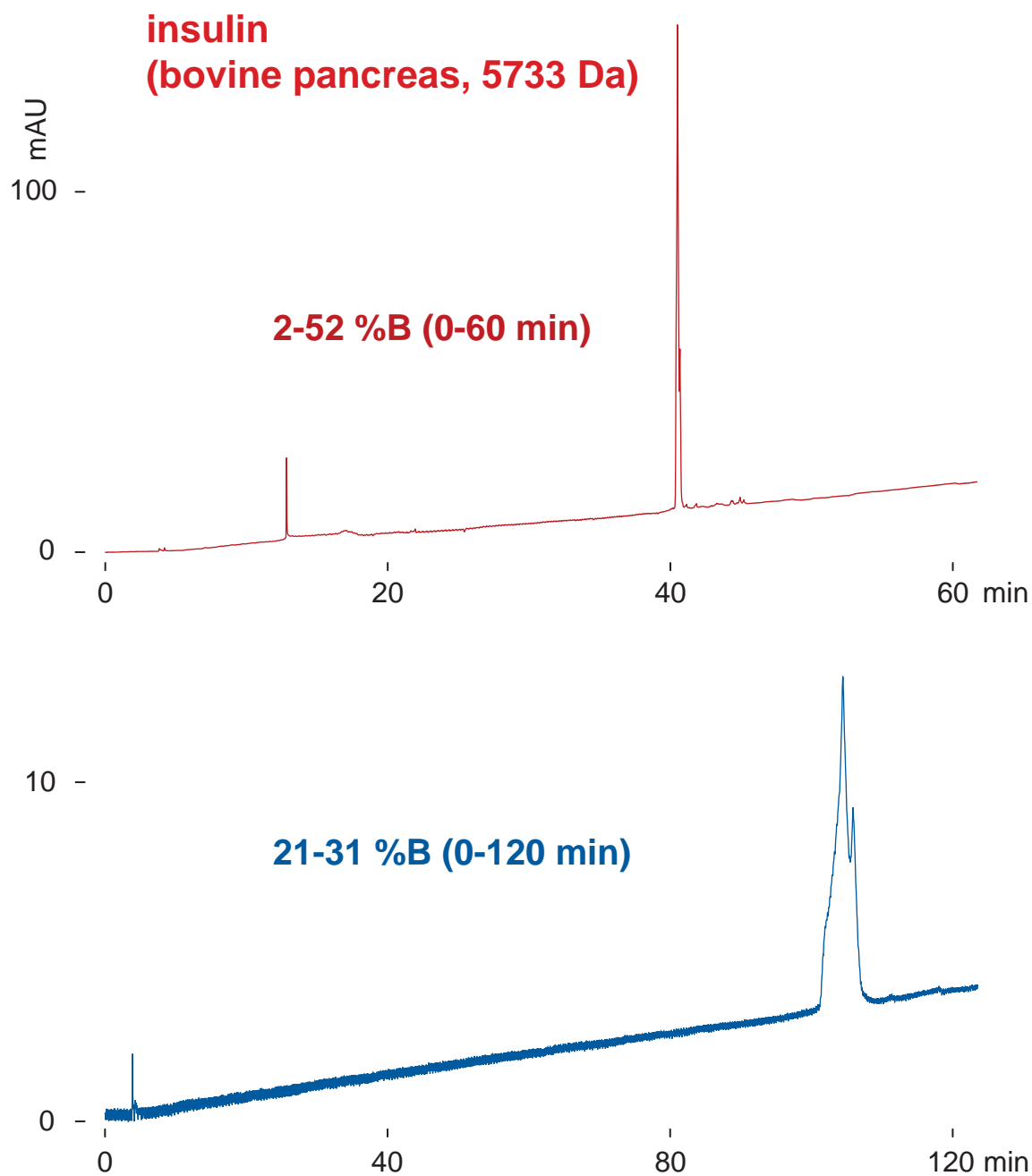
Presto FF-C18

250 x 4.6 mm

Application

## The effect of gradient slope for insulin separation

インスリンの分離に与えるグラジエント勾配の影響



Presto FF-C18, 250 x 4.6 mm

A: water / trifluoroacetic acid = 100 / 0.1

B: acetonitrile / trifluoroacetic acid = 100 / 0.1

0.4 mL/min (16 MPa), 80 deg.C, 220 nm, 1.6 uL (1.6 ug)