

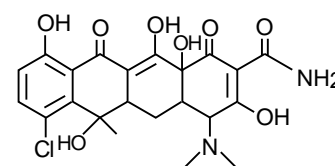
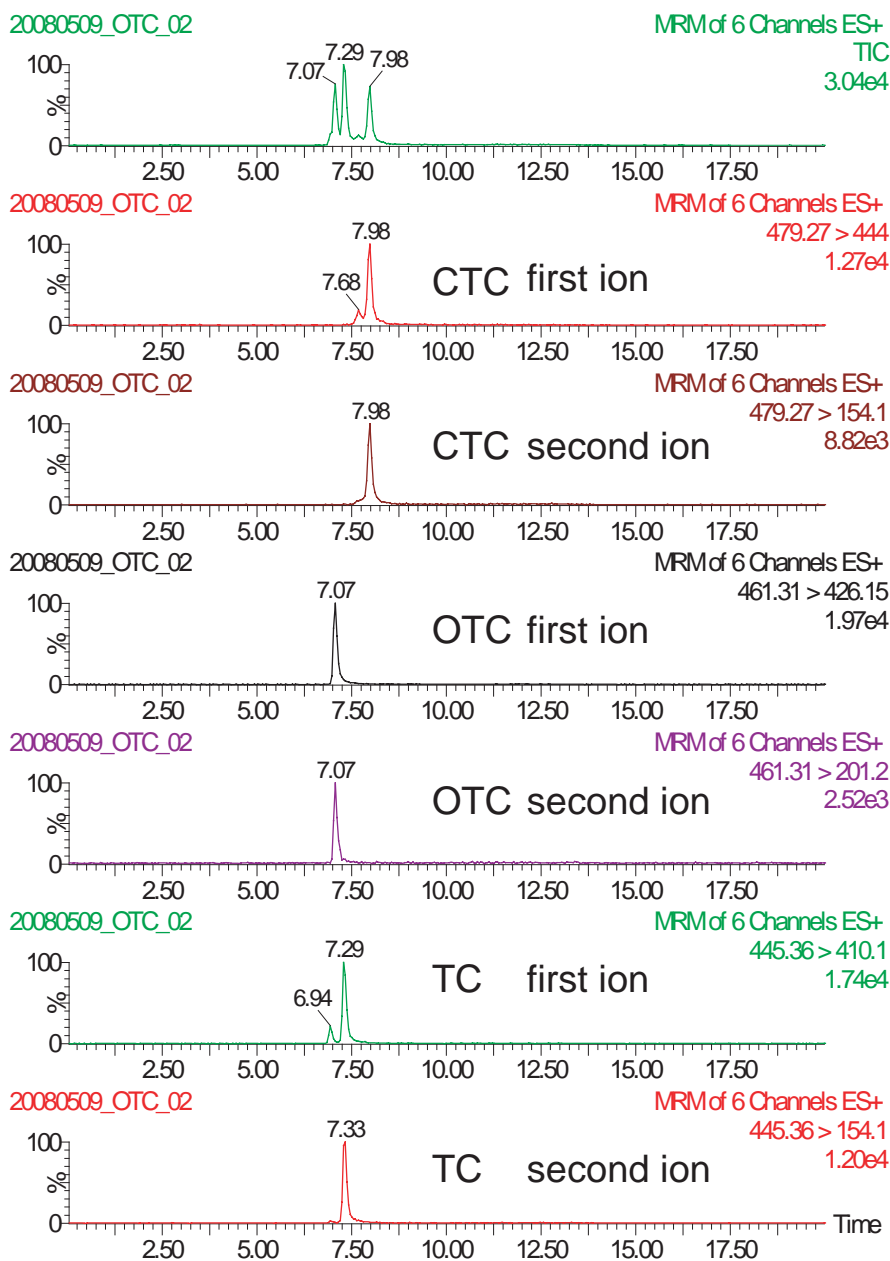
Cadenza CW-C18

100 x 2 mm

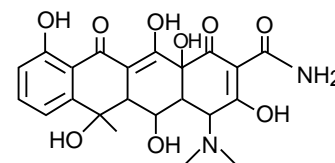
Application

## LC-MS/MS Application -Tetracycline Antibiotics

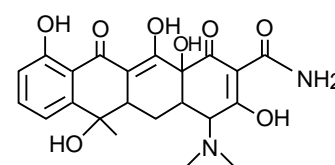
テトラサイクリン系抗生物質のLC-MS/MS分析



chlortetracycline (CTC)



oxytetracycline (OTC)



tetracycline (TC)

Cadenza CW-C18, 100 x 2 mm + Guard column  
 A: 0.1% HCOOH aq., B: 0.1% HCOOH in ACN  
 5 - 95%B ( 0 - 7 min ), 95 - 5%B ( 7 - 8 min ), 5%B ( 8 - 17 min )  
 0.2 mL/min, 40 deg.C, 10 uL ( 20 ppb ), ESI, positive

Courtesy of Mr. N. MAEDA, ASSOCIATION OF MEAT SCIENCE & TECHNOLOGY INSTITUTE, JAPAN