

Unison UK-Amino

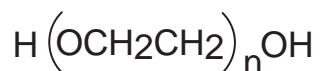
Cadenza CW-C18

150 x 4.6 mm

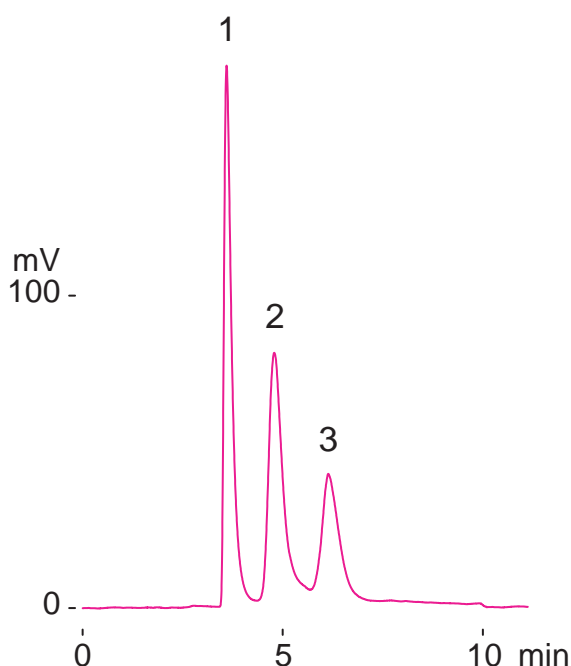
Application

Polyethylene glycol # 2000, 6000, 12000

ポリエチレングリコール # 2000, 6000, 12000

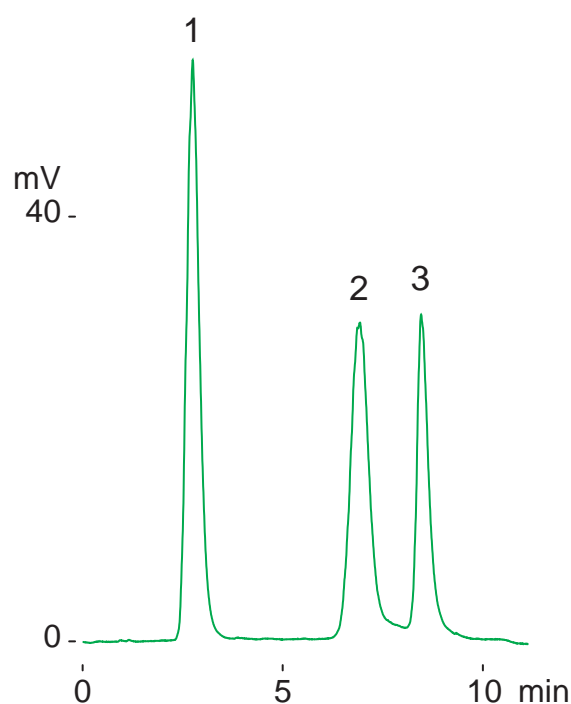


- 1 polyethylene glycol #2000 (Av. Mw. 2000)
- 2 polyethylene glycol #6000 (Av. Mw. 8500)
- 3 polyethylene glycol #12000 (Av. Mw. 12000)



normal phase

Unison UK-Amino, 150 x 4.6 mm
 A: hexane, B: tetrahydrofuran
 70-75%B(0-8min)
 1mL/min (4MPa), 60deg.C, ELSD
 0.4uL (3ug)



reversed phase

Cadenza CW-C18, 150 x 4.6 mm
 A: water, B: tetrahydrofuran
 10-15%B(0-10min)
 1mL/min (14MPa), 37deg.C, ELSD
 0.4uL (7ug)