

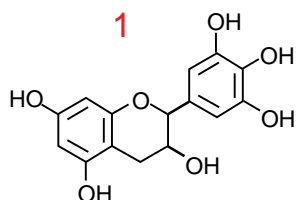
Unison UK-C18

250 x 4.6 mm

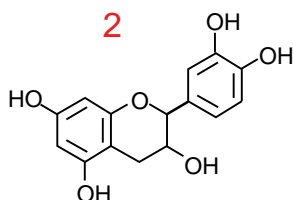
Application

Catechins and Flavonoids in Black Catechu and Chinese Scullcap

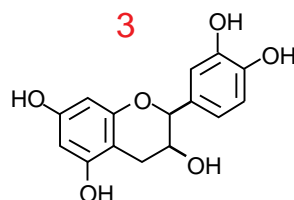
アセンヤクおよびコガネバナ中のカテキンとフラボノイド



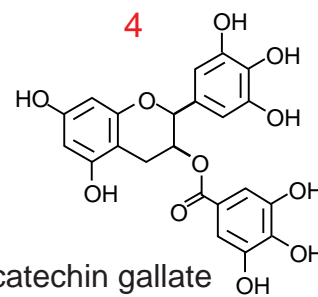
epigallocatechin  
EGC



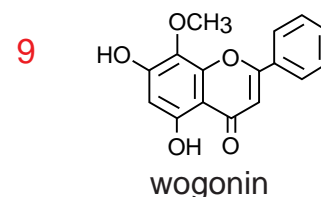
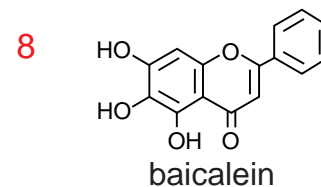
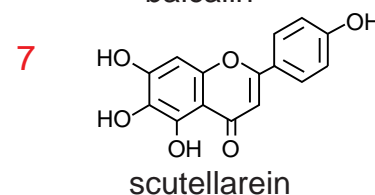
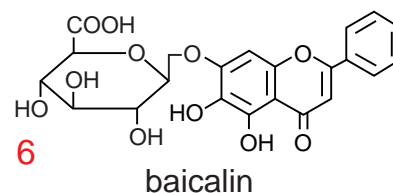
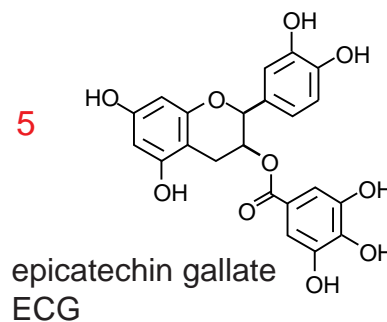
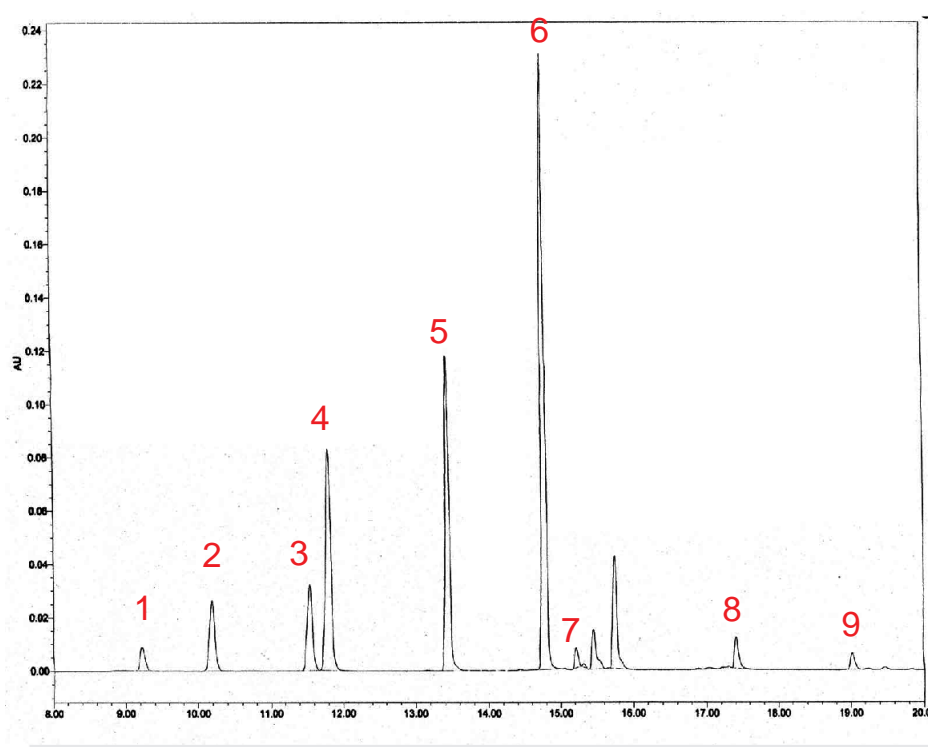
catechin  
C



epicatechin  
EC



epigallocatechin gallate  
EGCG



Unison UK-C18, 250 x 4.6mm

A: 0.125% TFA in water  
B: acetonitrile  
5-20%B (0-8min), 20-95%B (8-20min)  
1.0 mL/min, 45 deg.C  
5 uL inj., 2mg/40mL, UV at 280 nm

Courtesy of Tony Montanari, Ph.D., Perrigo Company of South Carolina - USA