

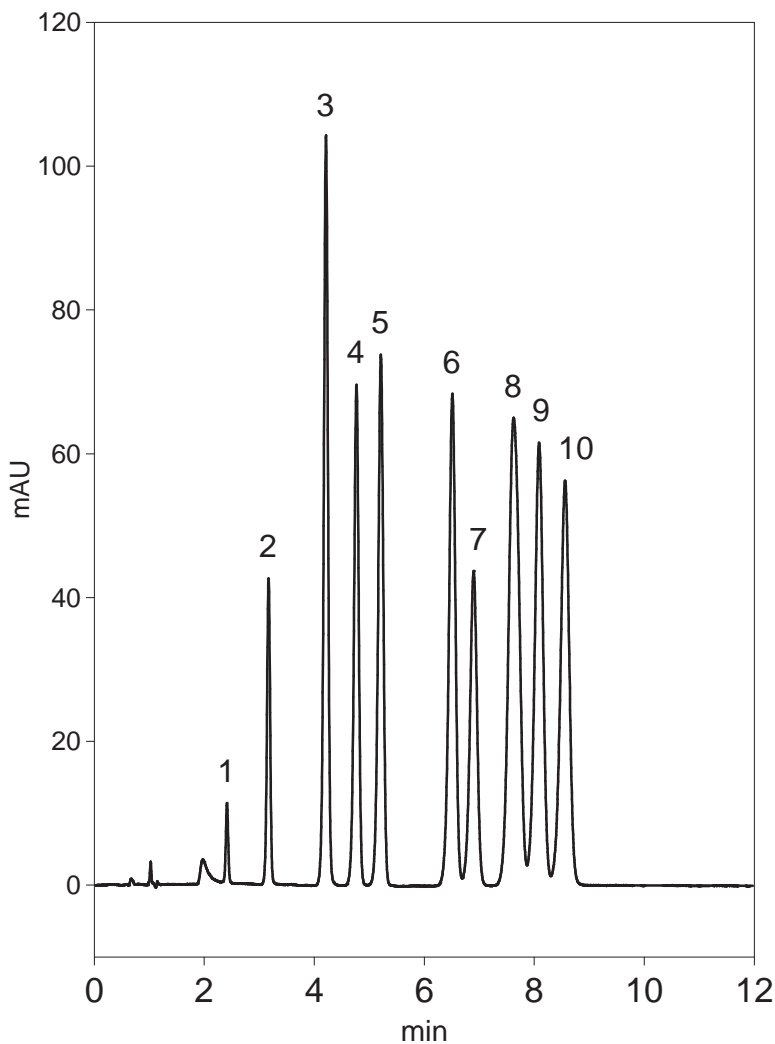
Cadenza CD-C18

100 x 4.6 mm

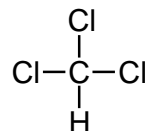
Application

Indoor air pollutants

室内空気汚染物質



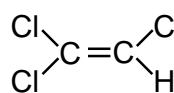
Cadenza CD-C18, 100 x 4.6 mm
 water / methanol = 30 / 70
 1.0 mL/min, 13.2 MPa
 37 °C, UV at 210 nm



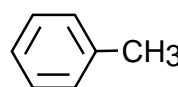
1
chloroform



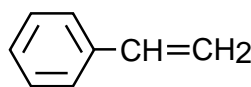
2
benzene



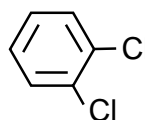
3
trichlorethylene



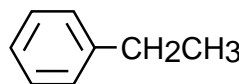
4
toluene



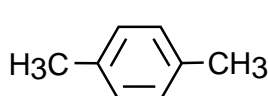
5
styrene



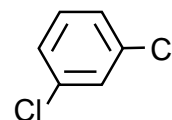
6
o-dichlorobenzene



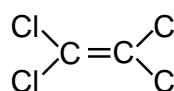
7
ethylbenzene



8
p-xylene



9
m-dichlorobenzene



10
tetrachlorethylene