

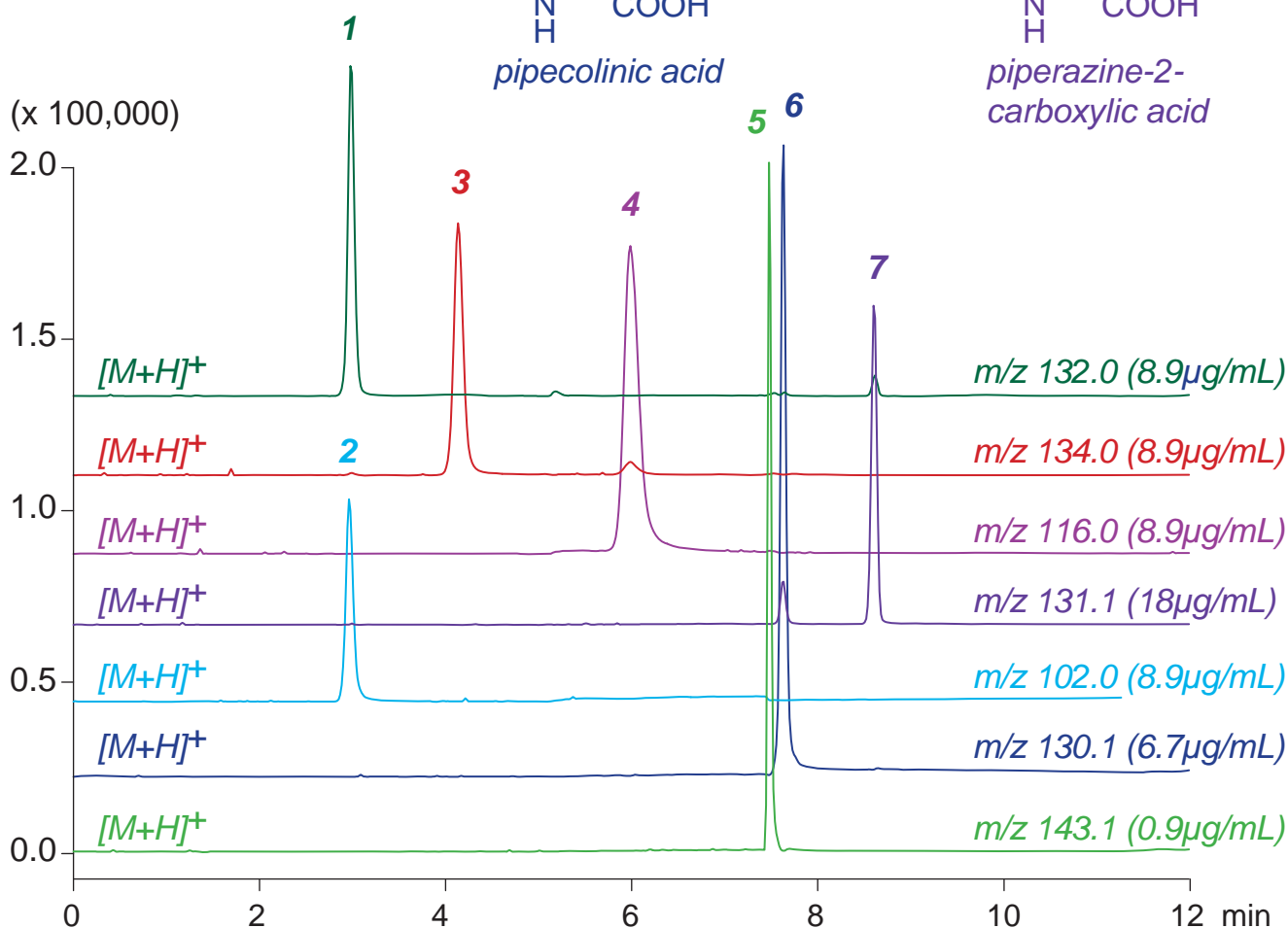
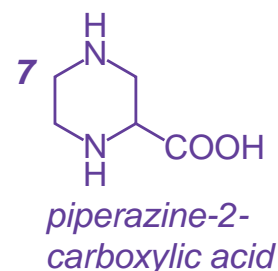
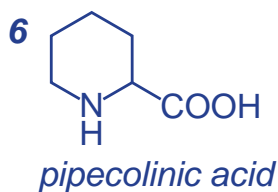
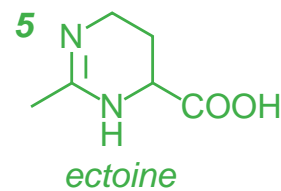
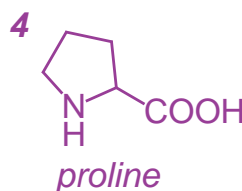
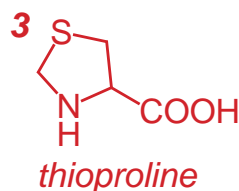
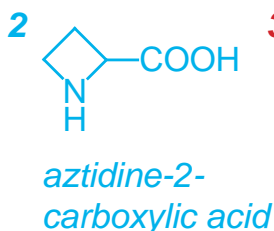
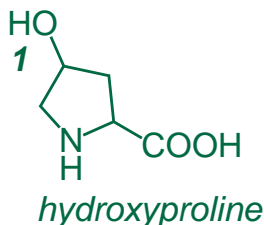
Scherzo SS-C18

100 x 3 mm

HPLC COLUMN APPLICATION

LC-MS: Cyclic amino acids

環状アミノ酸の LC-MS 分析



Scherzo SS-C18, 100 x 3 mm

A: water / formic acid = 100 / 0.5

B: acetonitrile / 100mM ammonium formate = 25 / 75

0%B (0-2min), 0-50%B (0-10min), 100%B (10-12min)

0.4mL/min (7MPa), 37°C, Single Quad. MS (ESI)

5µL (0.7-18µg/mL, 0.1% HCOOH)