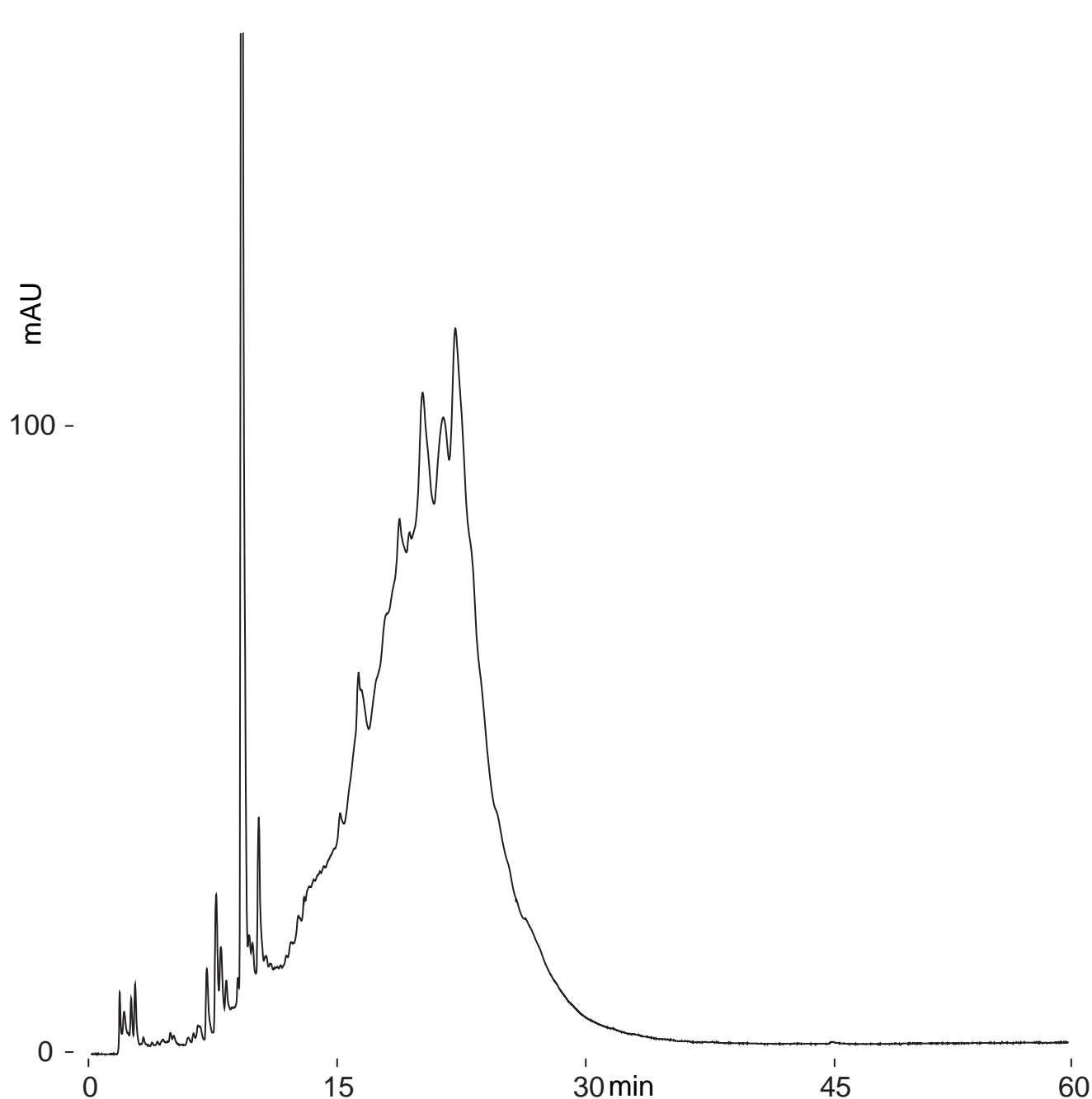


Cadenza CW-C18

150 x 4.6 mm

HPLC COLUMN APPLICATION

Lignin
リグニン

Cadenza CW-C18, 150 x 4.6 mm
A: water / acetic acid = 100 / 0.5
B: water / acetonitrile / acetic acid = 10 / 90 / 0.5
5-100%B (0-40min), 100%B (40-60min)
1mL/min(16MPa), 37°C, 280nm
20µL (5mg/mL, water / acetic acid = 100 / 1)