

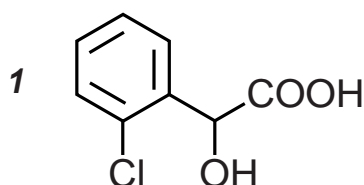
**Intrada** Organic Acid

150 x 2 mm

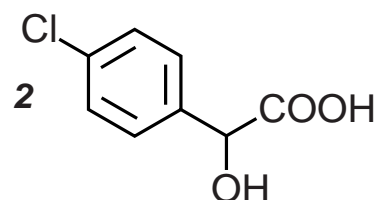
**HPLC COLUMN APPLICATION**

**LC-MS: Chloromandelic acid isomers**

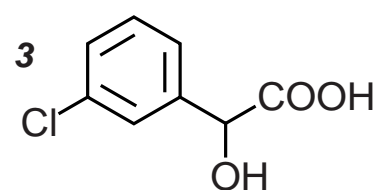
クロロマンデル酸異性体の LC-MS 分析



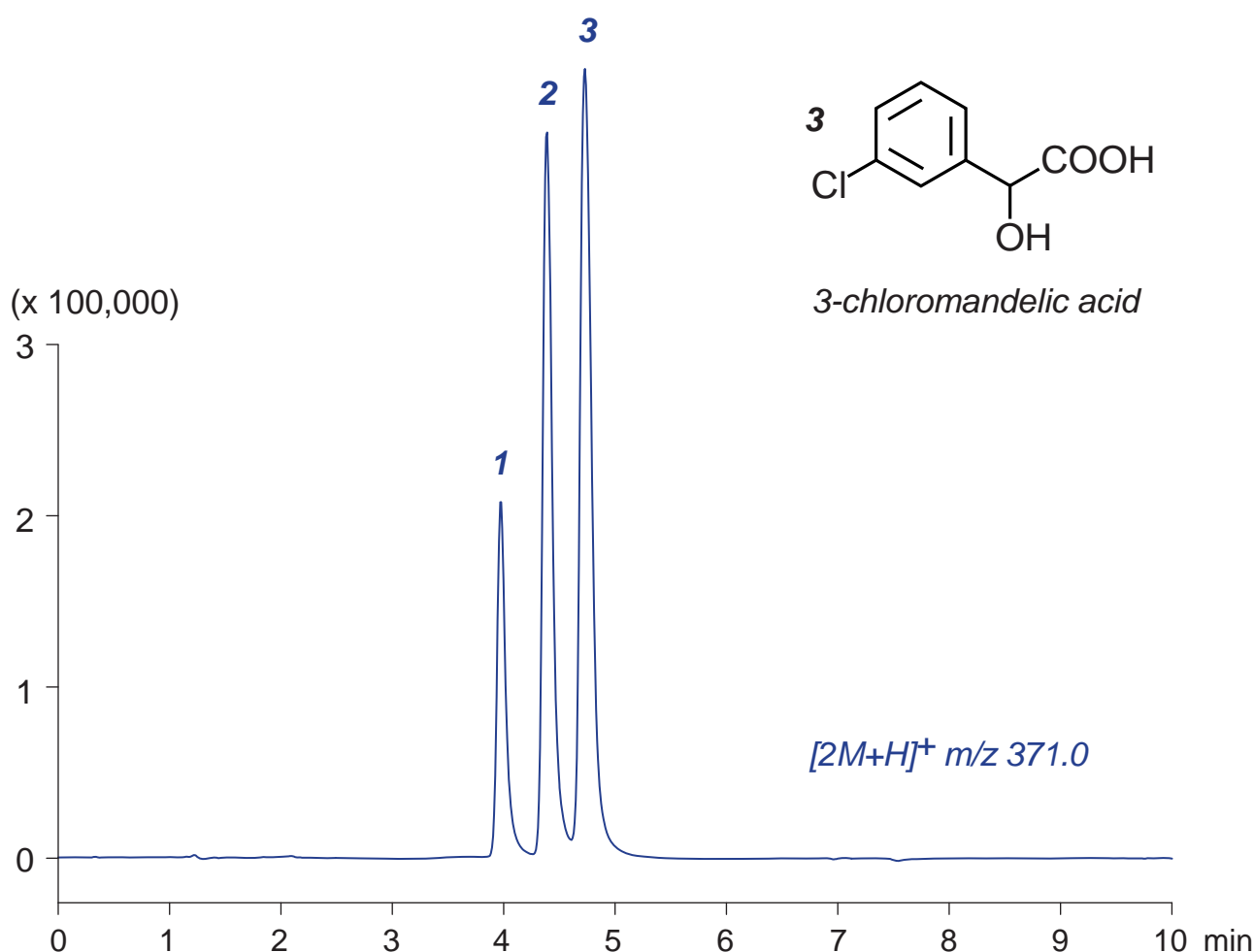
2-chloromandelic acid



4-chloromandelic acid



3-chloromandelic acid



*Intrada Organic Acid, 150 x 2 mm*

*A: methanol / water / acetic acid = 95 / 5 / 0.5*

*B: methanol / 100mM ammonium acetate = 10 / 90*

*0%B (0-1min), 0-35%B (1-10min)*

*0.2mL/min (10MPa), 37°C, Single Quad. MS (ESI)*

*5µL (10µg/mL, acetonitrile / water = 50 / 50)*