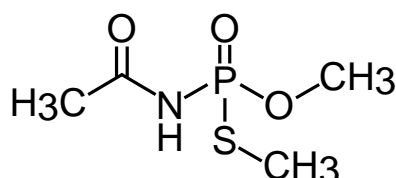


Scherzo SW-C18
 Scherzo SM-C18
 Scherzo SS-C18

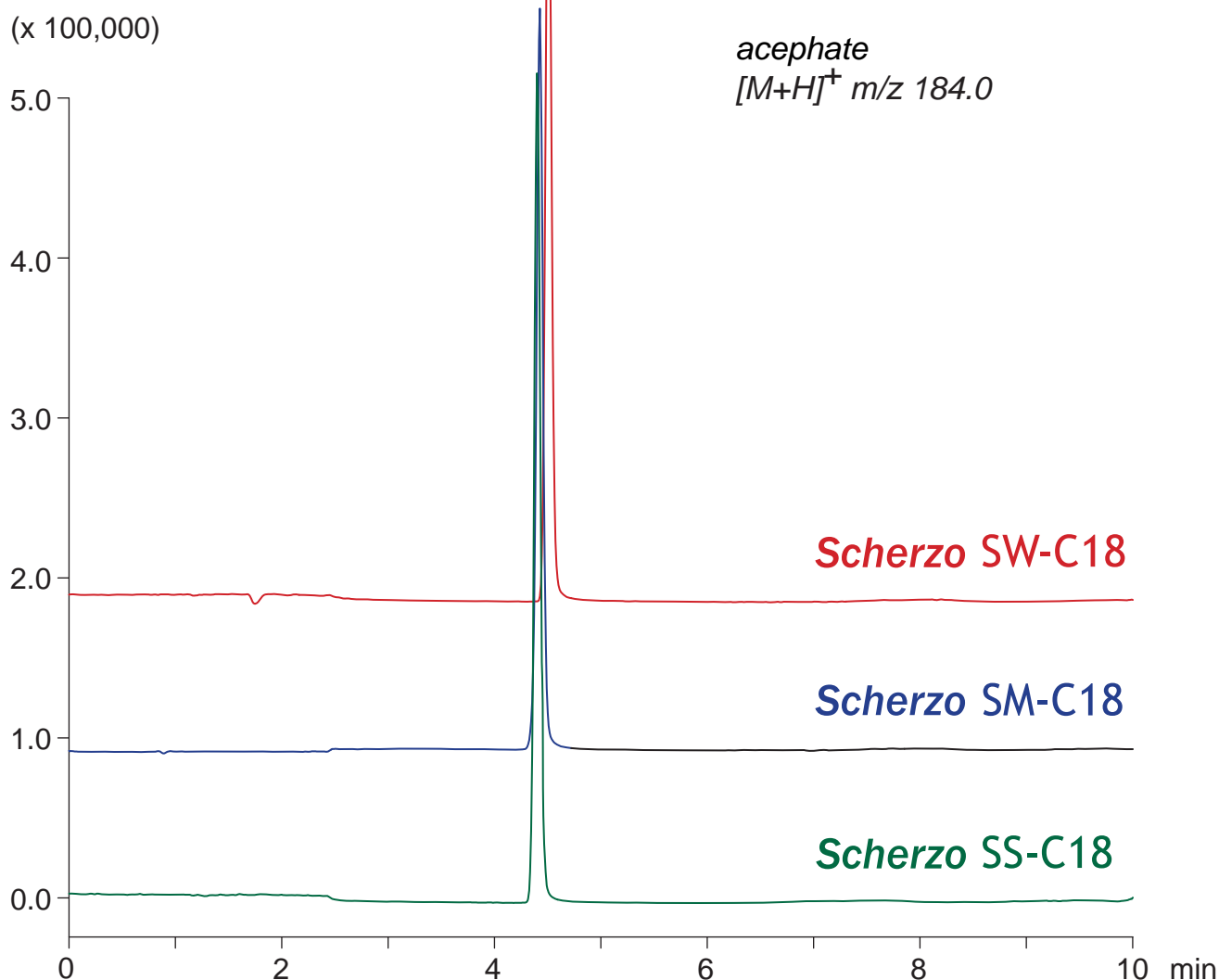
100 x 3 mm

HPLC COLUMN APPLICATION

LC-MS: Acephate
 アセフェートの LC-MS 分析



acephate
 $[M+H]^+$ m/z 184.0



100 x 3 mm
 A: water / formic acid = 100 / 0.1
 B: acetonitrile / water / formic acid = 20 / 80 / 0.1
 0-100%B (0-10min)
 0.4mL/min (7MPa), 37°C, MS (ESI, SIM, positive)
 5µL (1µg/mL, water / HCOOH = 100 / 0.1)