

**Intrada Organic Acid**

150 x 2 mm

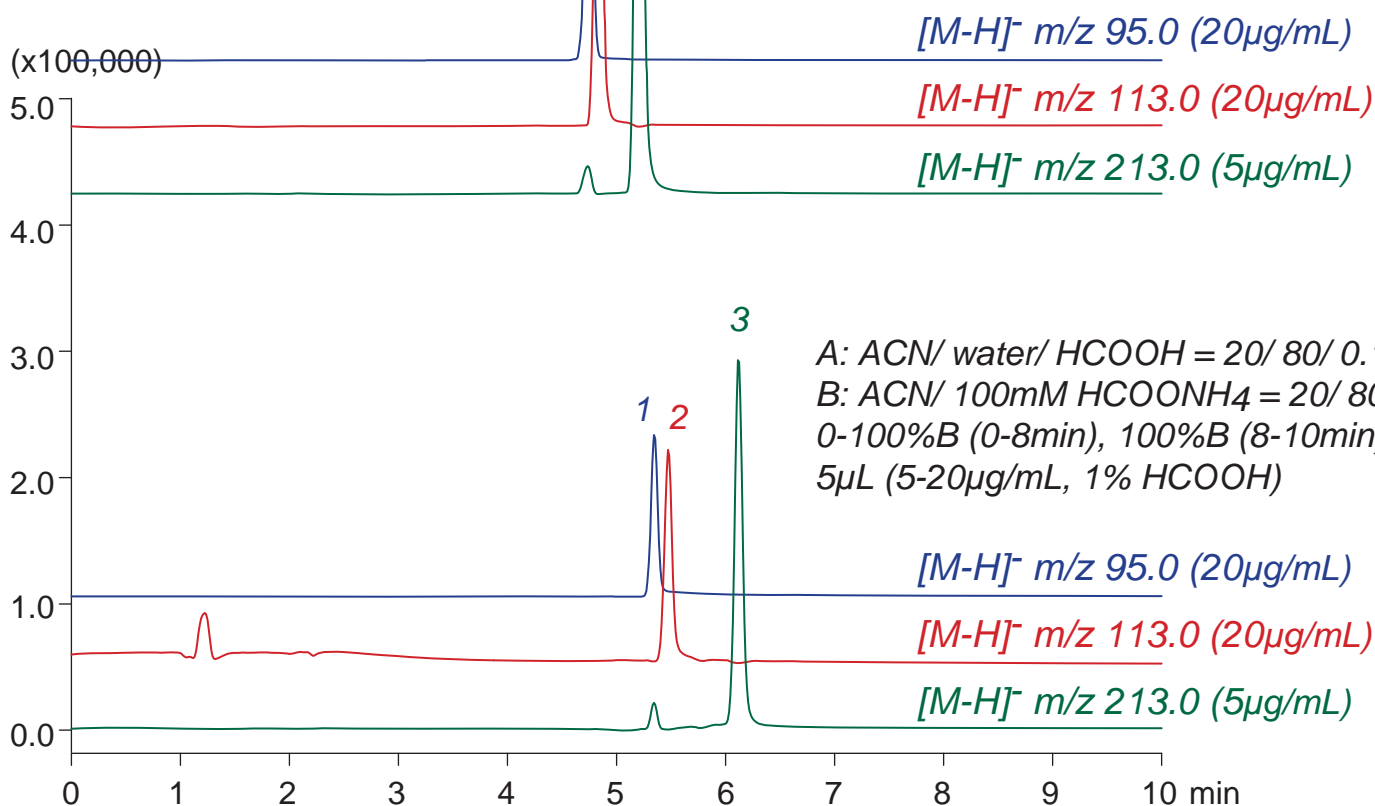
**HPLC COLUMN APPLICATION**

**LC-MS: fluoroorganic acid**

フルオロ有機酸の LC-MS 分析

- 1 **CHF<sub>2</sub>COOH**  
difluoroacetic acid (DFA)
- 2 **CF<sub>3</sub>COOH**  
trifluoroacetic acid (TFA)
- 3 **CF<sub>3</sub>(CF<sub>2</sub>)<sub>2</sub>COOH**  
heptafluorobutyric acid (HFBA)

A: ACN/ water/ AcOH = 20/ 80/ 0.1  
 B: ACN/ 100mM AcONH<sub>4</sub> = 20/ 80  
 0-30%B (0-8min), 100%B (8-10min)  
 5μL (5-20μg/mL, 1% AcOH)



Intrada Organic Acid, 150 x 2 mm  
 0.2mL/min (13MPa), 37°C, MS (ESI, SIM, Negative)