

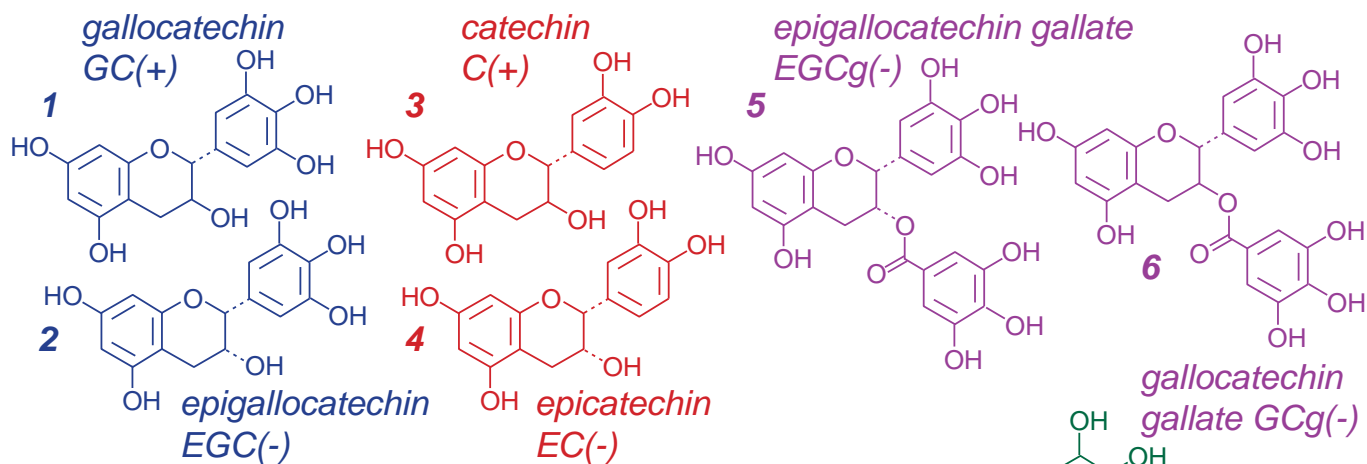
Unison UK-C18

150 x 3 mm

Application

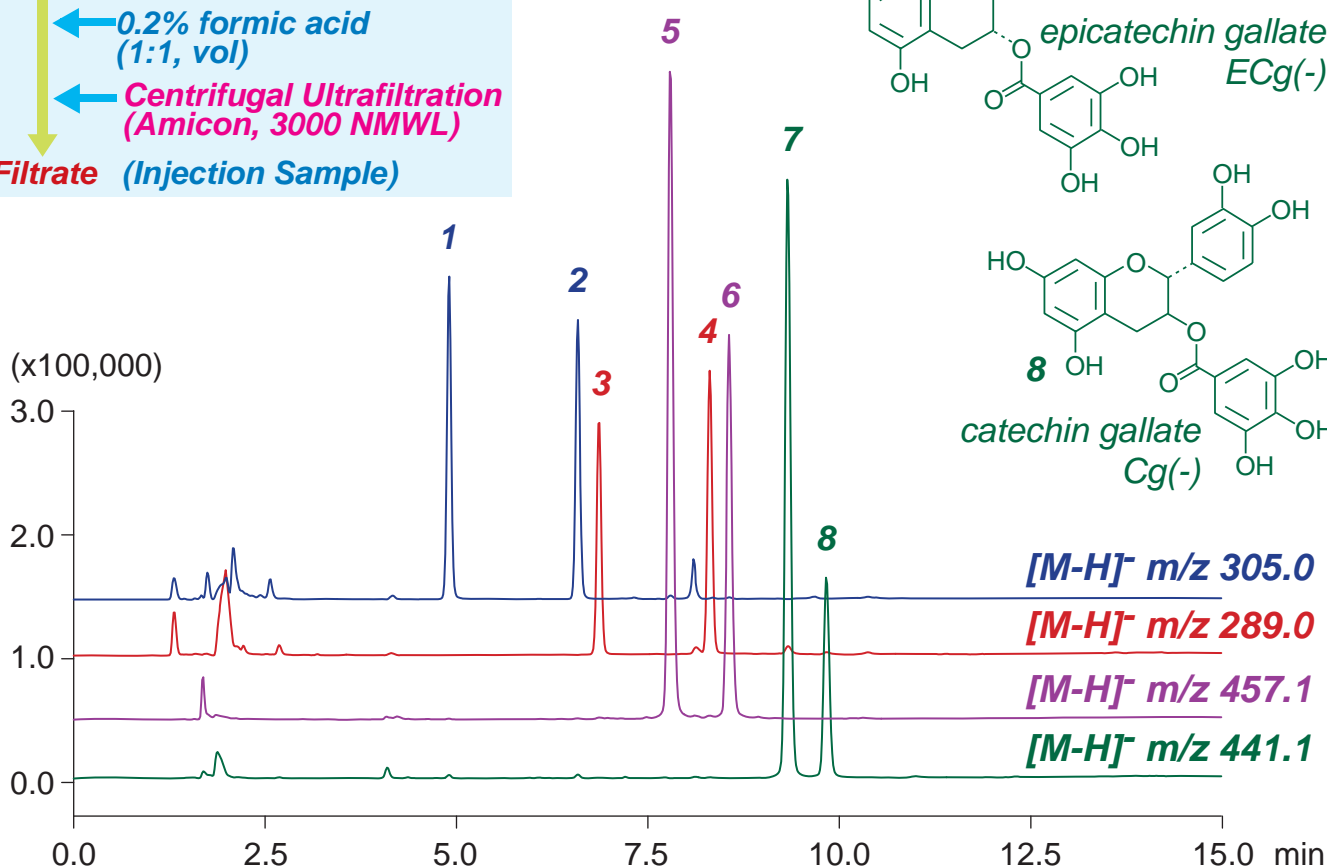
LC-MS: Catechins in Black Tea Beverage

紅茶飲料中のカテキン類のLC-MS分析



BlackTea

← 0.2% formic acid (1:1, vol)
← Centrifugal Ultrafiltration (Amicon, 3000 NMWL)
↓
Filtrate (Injection Sample)



Unison UK-C18, 150 x 3 mm

A: water / formic acid = 100 / 0.1

B: methanol / water / formic acid = 60 / 40 / 0.1

20%B (0-1min), 20-100%B (1-12 min), 100%B (12-15 min)

0.4mL/min (9MPa), 37°C, 5μL

MS (ESI, SIM, Negative)