

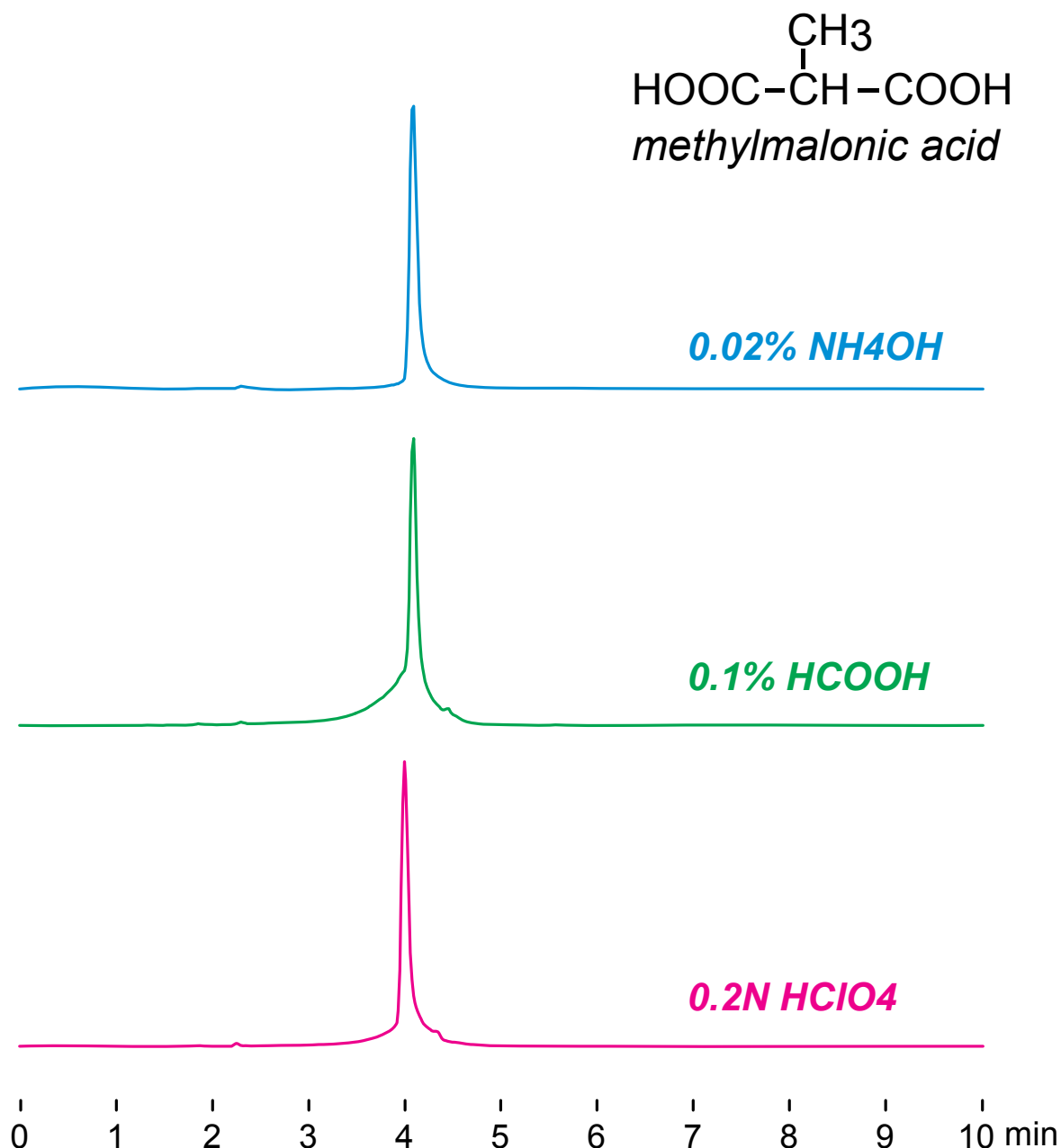
**Intrada Organic Acid**

150 x 2 mm

Application

LC-MS: Methylmalonic acid (sample solvent effect)

メチルマロン酸のLC-MS分析 (試料溶媒の影響)



*Intrada Organic Acid, 150 x 2 mm*

*A: acetonitrile / water / HCOOH = 10 / 90 / 0.1*

*B: acetonitrile / 100mM HCOONH<sub>4</sub> = 10 / 90*

*0%B (0-1min), 0-100%B (1-7min), 100%B (7-10min)*

*0.2mL/min (12MPa), 37°C, 5µL (100µg/mL)*

*MS (ESI, SIM), [M-H]<sup>-</sup> m/z = 117.0*