

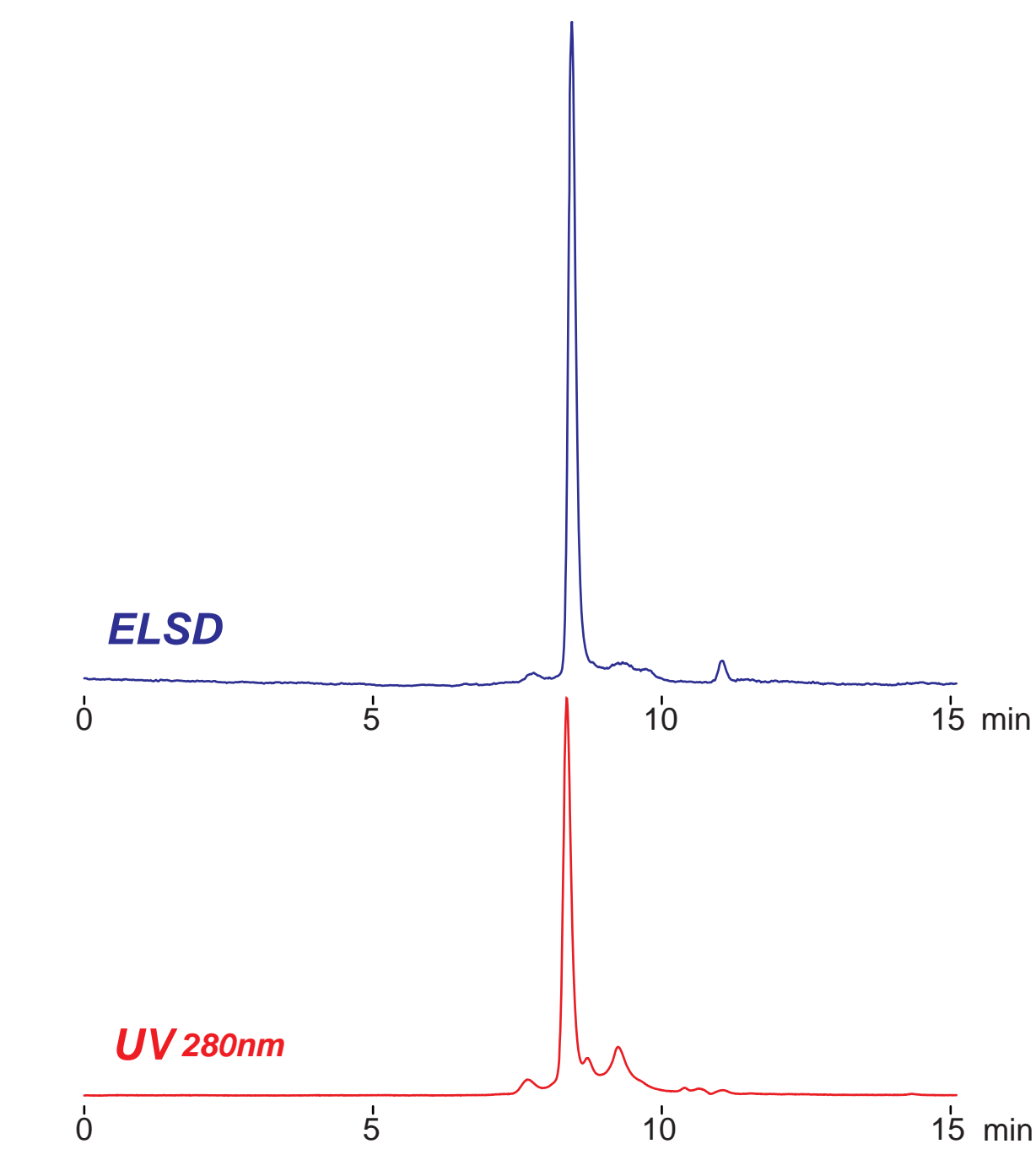
**Intrada SEC**

250 x 4.6 mm

Application

**SEC: Bovine serum albumin (BSA)**

ウシ血清アルブミン (BSA) のSEC分離



*Intrada SEC, 250 x 4.6 mm  
100mM ammonium formate  
0.3 mL/min (5MPa), 37°C  
5  $\mu$ L, (1mg/mL, water)*