

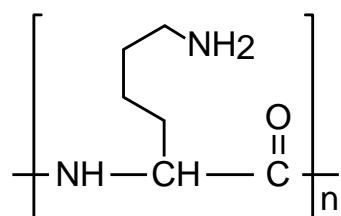
**Intrada SEC**

250 x 4.6 mm

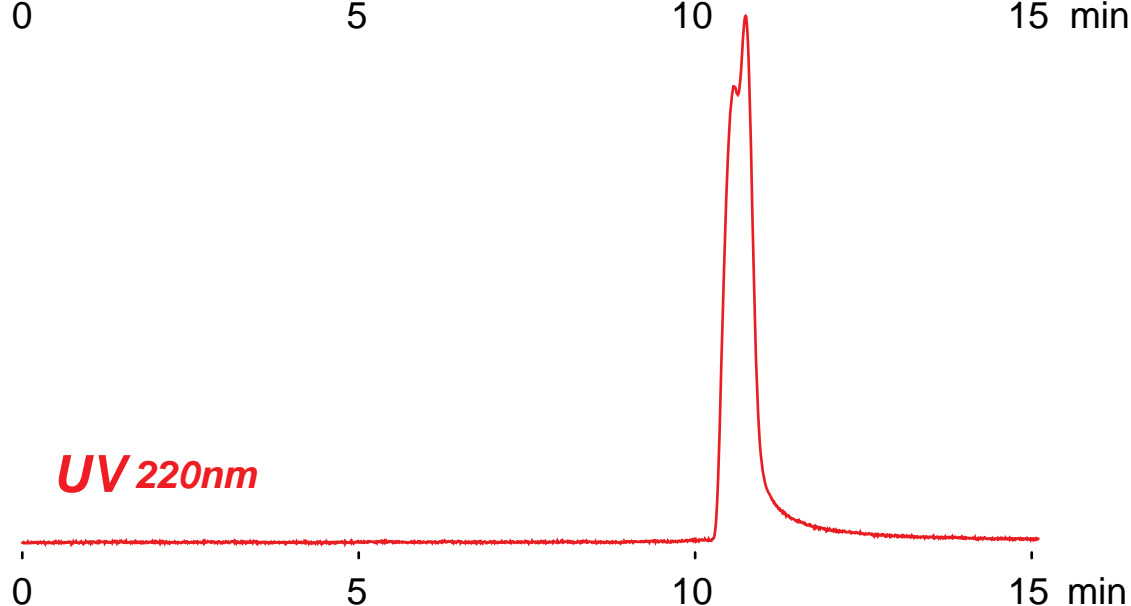
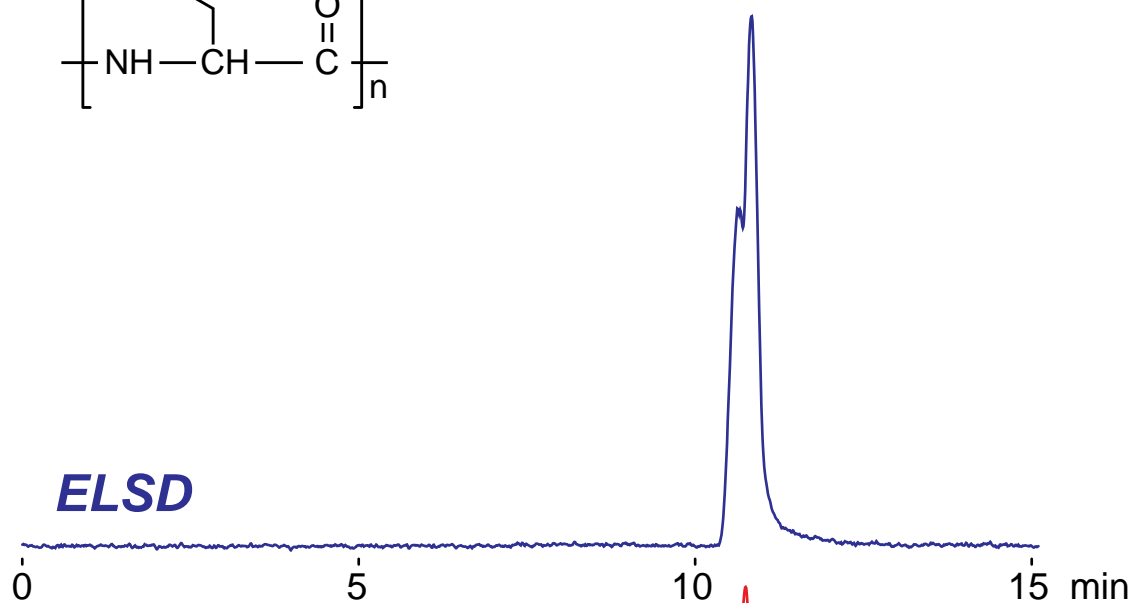
Application

**SEC: Polylysine**

ポリリジン(ポリ-L-リジン)のSEC分離



*poly-L-lysine*  
MW : 1,000-5,000



*Intrada SEC, 250 x 4.6 mm  
100mM ammonium formate  
0.3 mL/min (5MPa), 37°C  
10 μL, (1mg/mL, eluent)*