

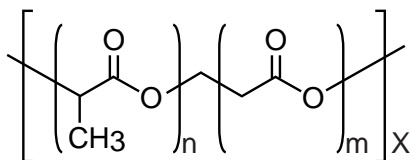
Intrada SEC

250 x 4.6 mm

Application

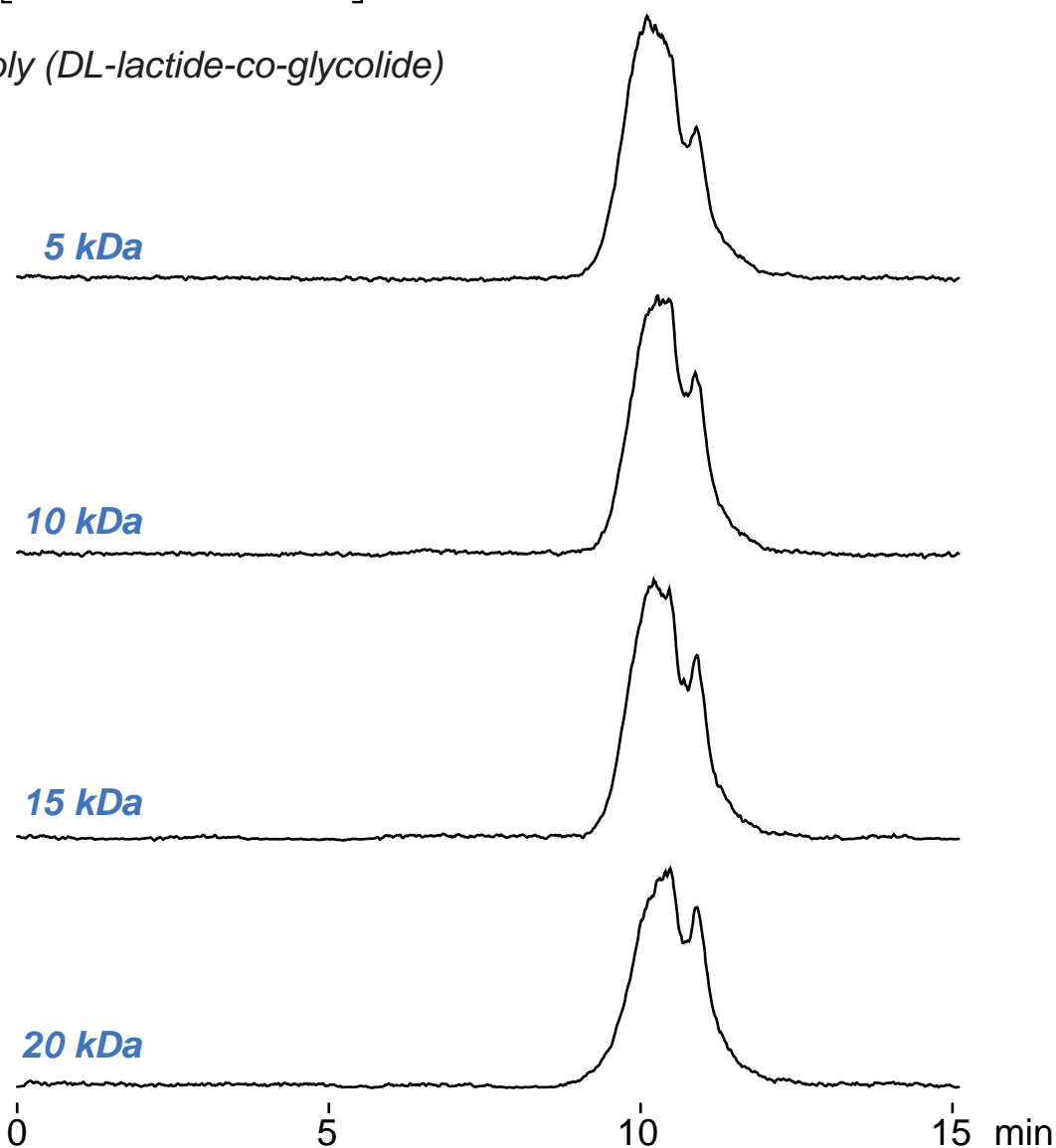
SEC: PLGA, Poly(lactic-co-glycolic acid)

ポリ乳酸-グリコール酸共重合体(PLGA)のSEC分離



lactide / glycolide
= 75 / 25 (mole %)

poly (DL-lactide-co-glycolide)



Intrada SEC, 250 x 4.6 mm
acetonitrile / water = 65 / 35
0.3 mL/min (3MPa), 60°C
2 μL (5mg/mL, THF)

ELSD