

**Intrada SEC**

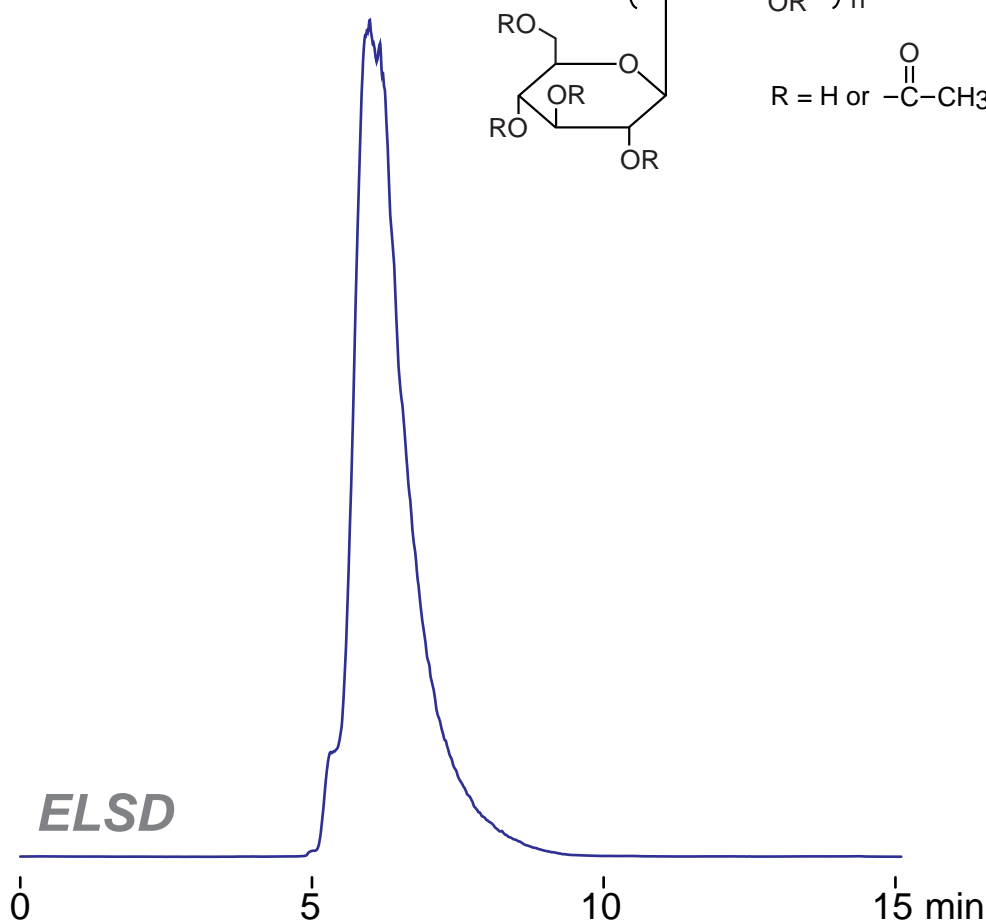
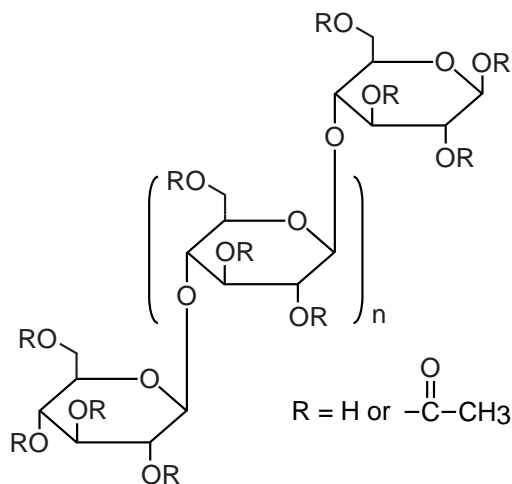
250 x 4.6 mm

Application

**SEC: Cellulose Acetate (acetylcellulose)**

酢酸セルロース(アセチルセルロース)のSEC分離

cellulose acetate  
(40 wt.% acetyl)



*Intrada SEC, 250 x 4.6 mm  
acetonitrile / water = 60 / 40  
0.3 mL/min (5MPa), 37°C  
5 μL (5mg/mL, acetonitrile)*