

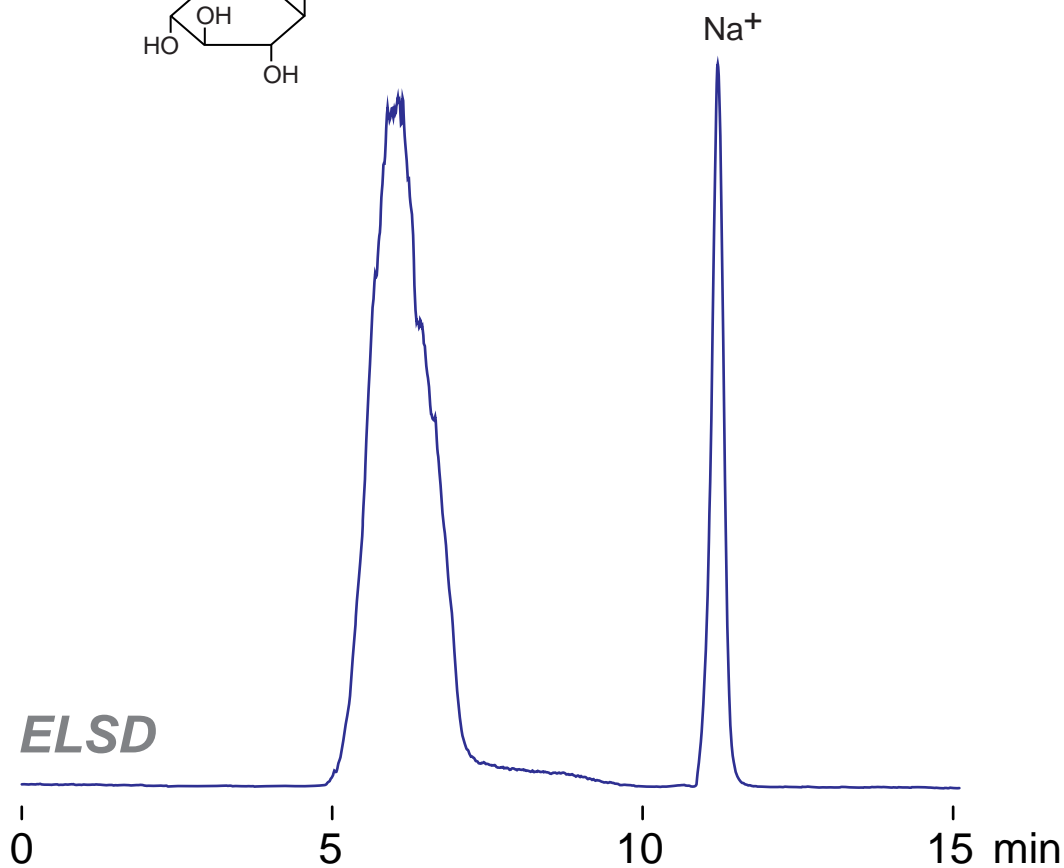
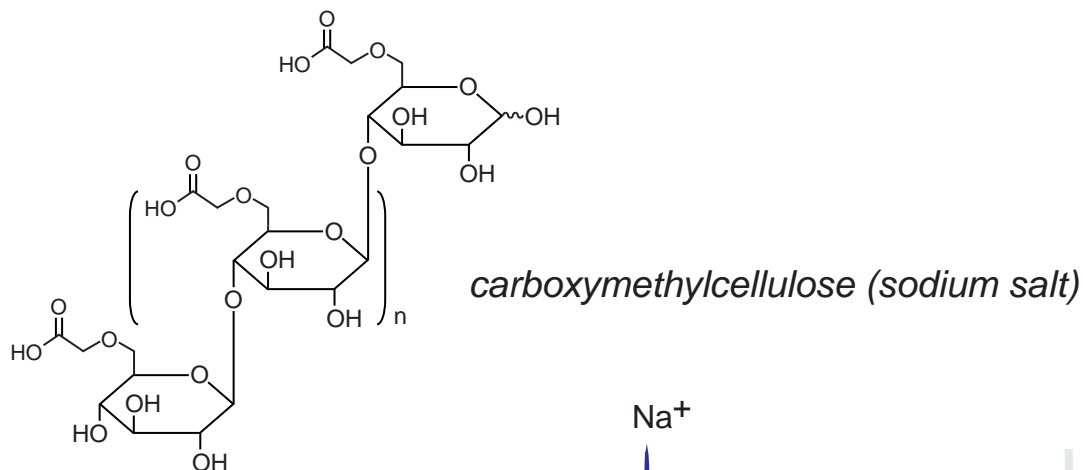
Intrada SEC

250 x 4.6 mm

Application

SEC: Carboxymethyl cellulose (CMC)

カルボキシセルロース(CMC)のSEC分離



Intrada SEC, 250 x 4.6 mm  
100mM ammonium formate  
0.3 mL/min (5MPa), 37°C  
10  $\mu$ L (5mg/mL, eluent)