

**Intrada SEC**

250 x 4.6 mm

Application

SEC: Monoclonal antibody (mAb)

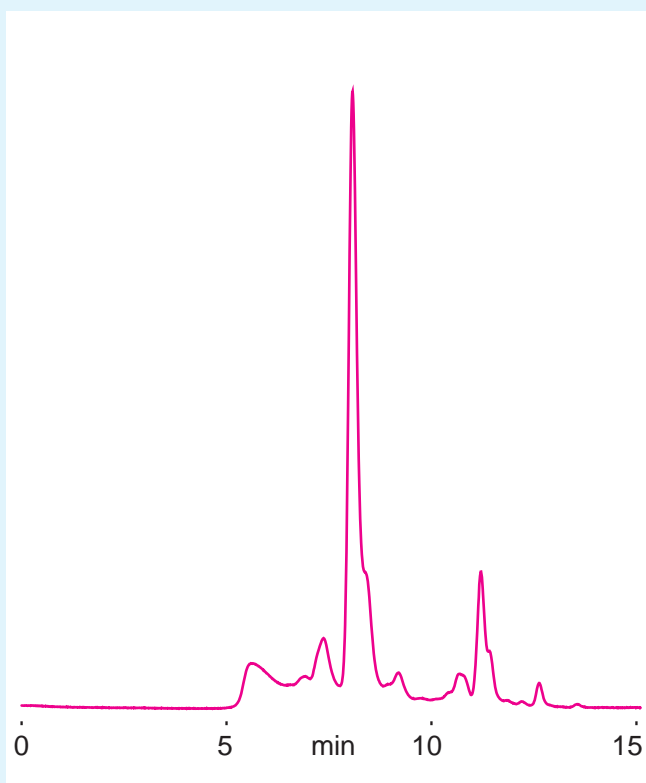
モノクローナル抗体のSEC分離



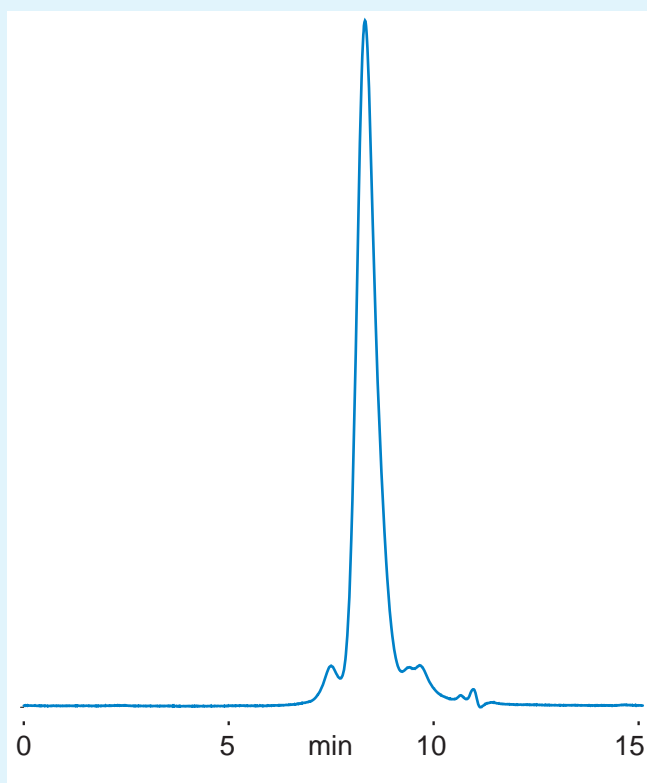
**SEC: mAb, IgG**

**Intrada SEC**

**mAb**  
**Anti  $\alpha$ - Fetoprotein**



**IgG from human serum**



871

*Intrada SEC, 250 x 4.6mm  
100mM ammonium formate  
0.3 mL/min (5MPa), 37°C, 280nm  
15  $\mu$ L (0.5-1mg/mL)*