

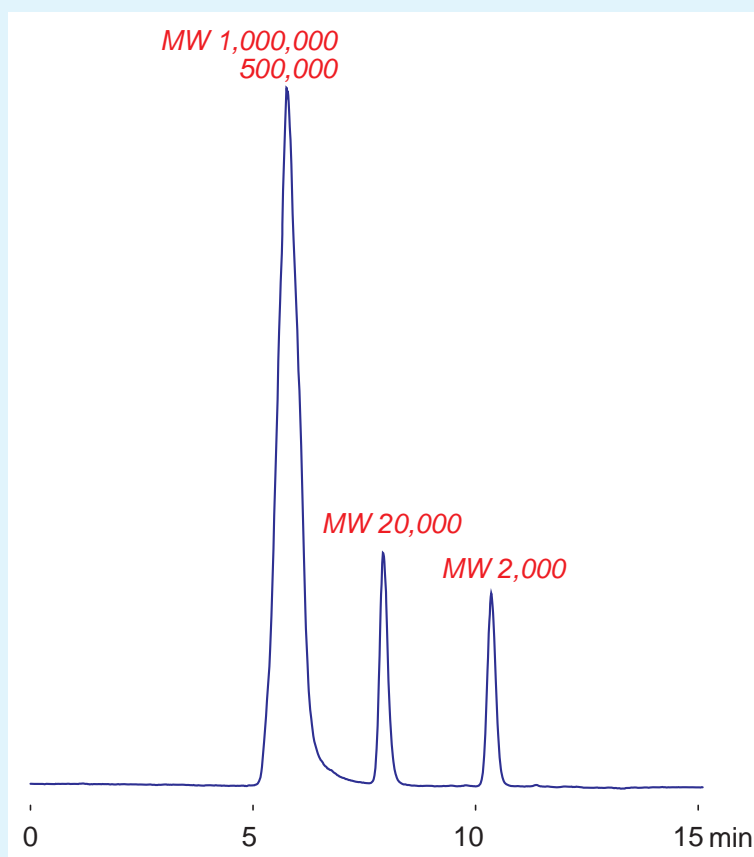
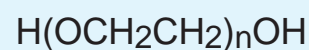
Intrada SEC

250 x 4.6 mm

Application

SEC: Polyethylene Glycol

ポリエチレングリコールのSEC分離

**SEC: PEG****Intrada SEC****Polyethylene Glycol**

*Intrada SEC, 250x4.6mm
water / methanol = 70 / 30
0.3mL/min (7MPa), 37°C
ELSD (spray chamber 50°C, drift tube 100°C)
8 μ L (0.25-0.75mg/mL, 50%THF)*