

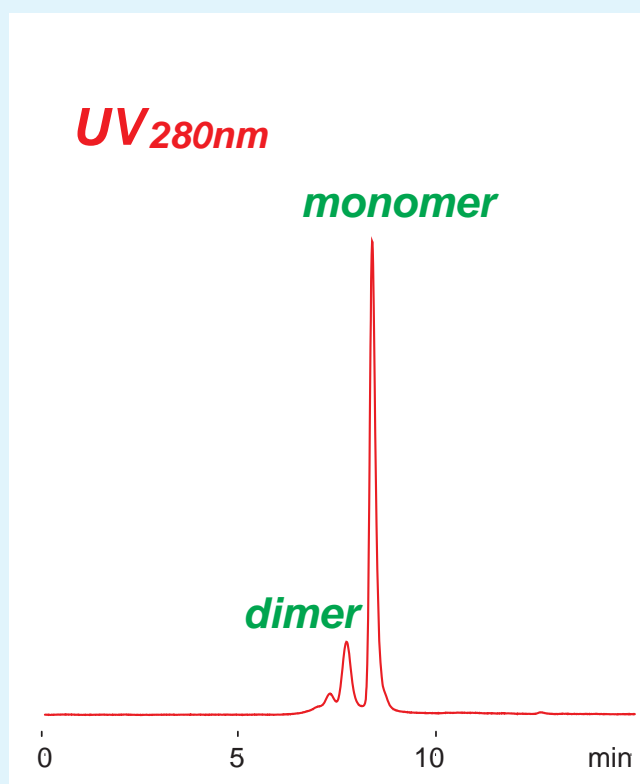
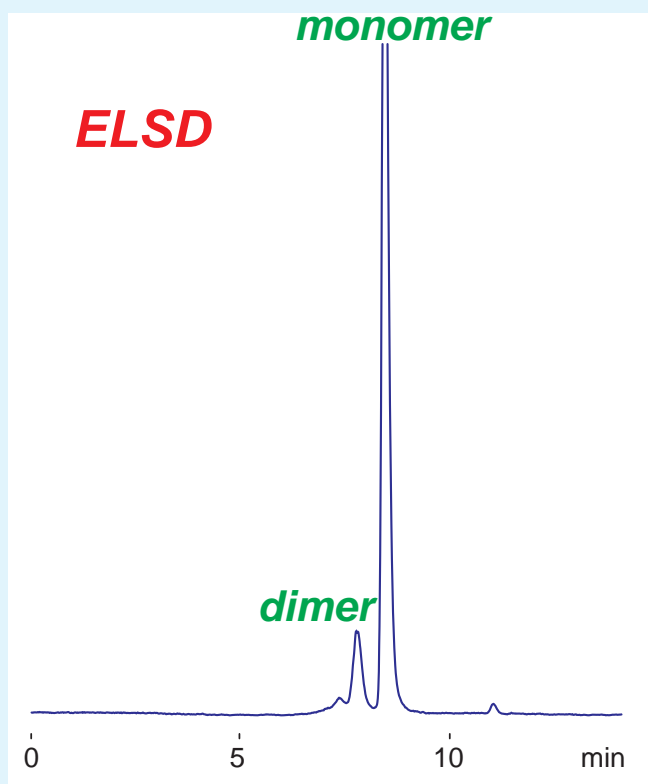
Intrada SEC

250 x 4.6 mm

Application

BSA (Bovine Serum Albumin) Monomer, Dimer

ウシ血清アルブミン, モノマー, ダイマー

**SEC: BSA Dimer****Intrada SEC****BSA (Bovine Serum Albumin)****Monomer 66 kDa**
Dimer 132 kDa

Intrada SEC, 250x4.6mm
100mM ammonium formate
0.3mL/min (5MPa), 37 °C, 10 µL (1mg/mL)