

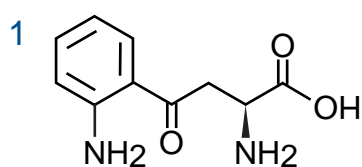
Scherzo SS-C18

50 x 3 mm

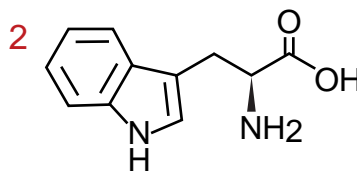
Application

LC-MS: Kynurenine / Tryptophan Ratio (KTR) of Human serum

ヒト血清のキヌレニン / トリプトファン比 (KTR)



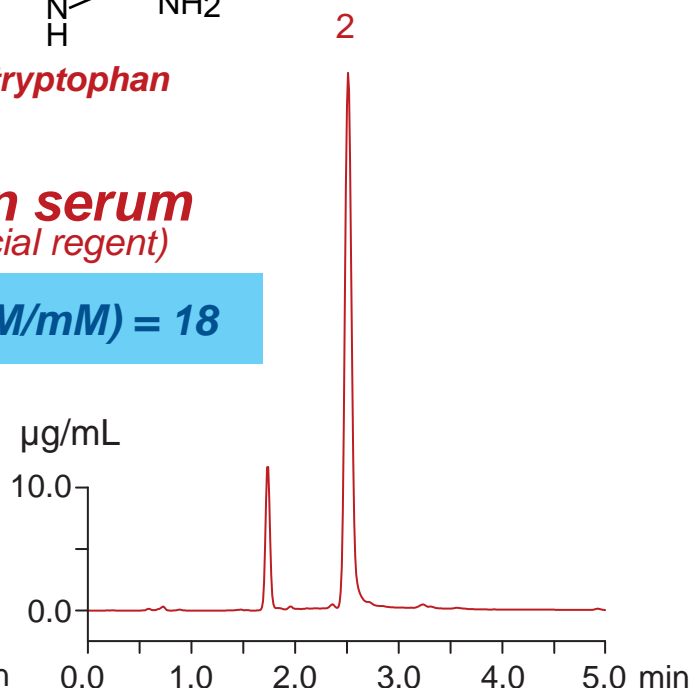
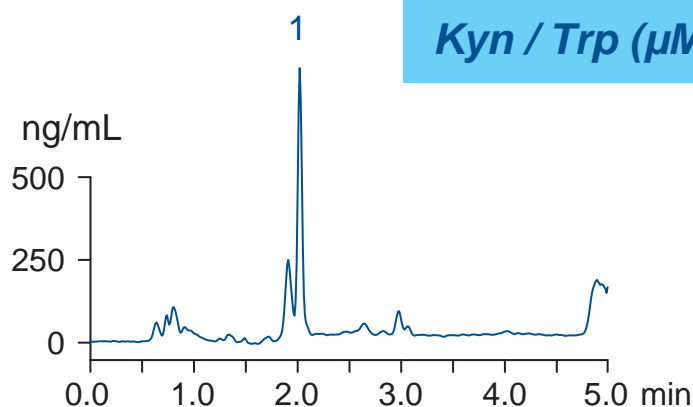
**L-kynurenine**



**L-tryptophan**

**Human serum**  
(commercial reagent)

**Kyn / Trp (μM/mM) = 18**



**Human serum**

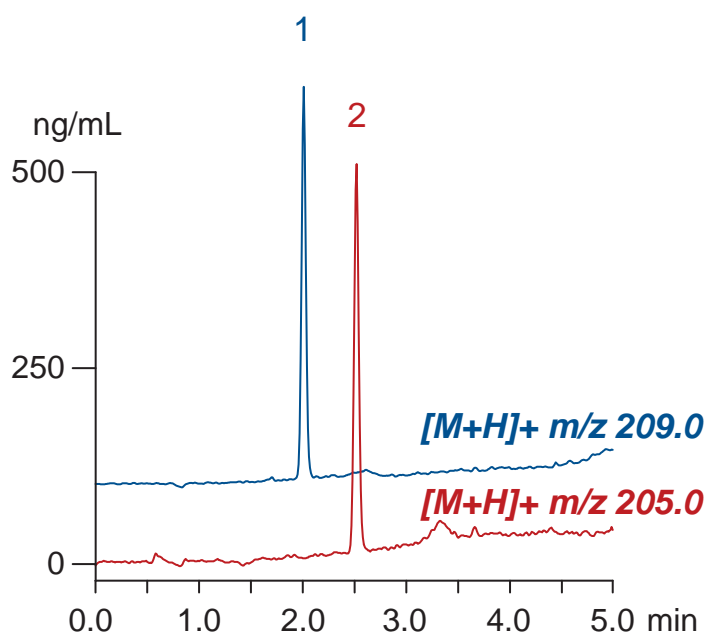
← 5% 5-sulfosalicylic acid (1:1, vol)

← mixing

← centrifugation (12000 rpm, 5 min)

**Supernatant**  
(Injection Sample)

**Standard solution**  
(500 ng/mL, 1% HCOOH)



Scherzo SS-C18, 50 x 3 mm  
A: ACN / water / HCOOH = 10 / 90 / 0.5  
B: ACN / 100mM HCOONH<sub>4</sub> = 20 / 80  
10-100%B (0-3 min), 100%B (3-5 min)  
0.4 mL/min (4 MPa), 37°C, 20 μL  
Single Quad. MS (ESI)