

DACAPO DX-C18

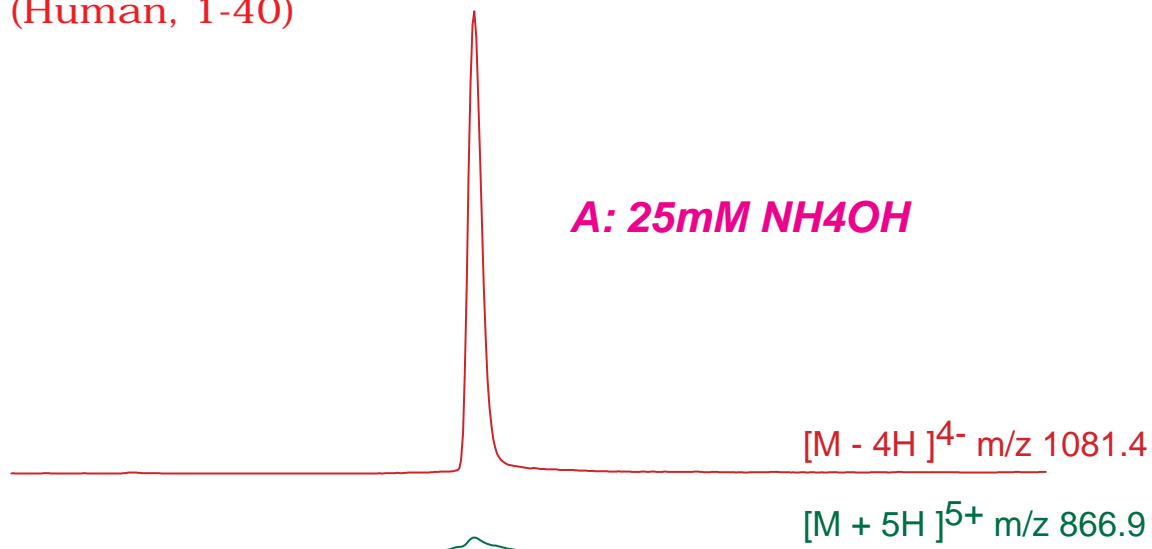
50 x 2 mm

Application

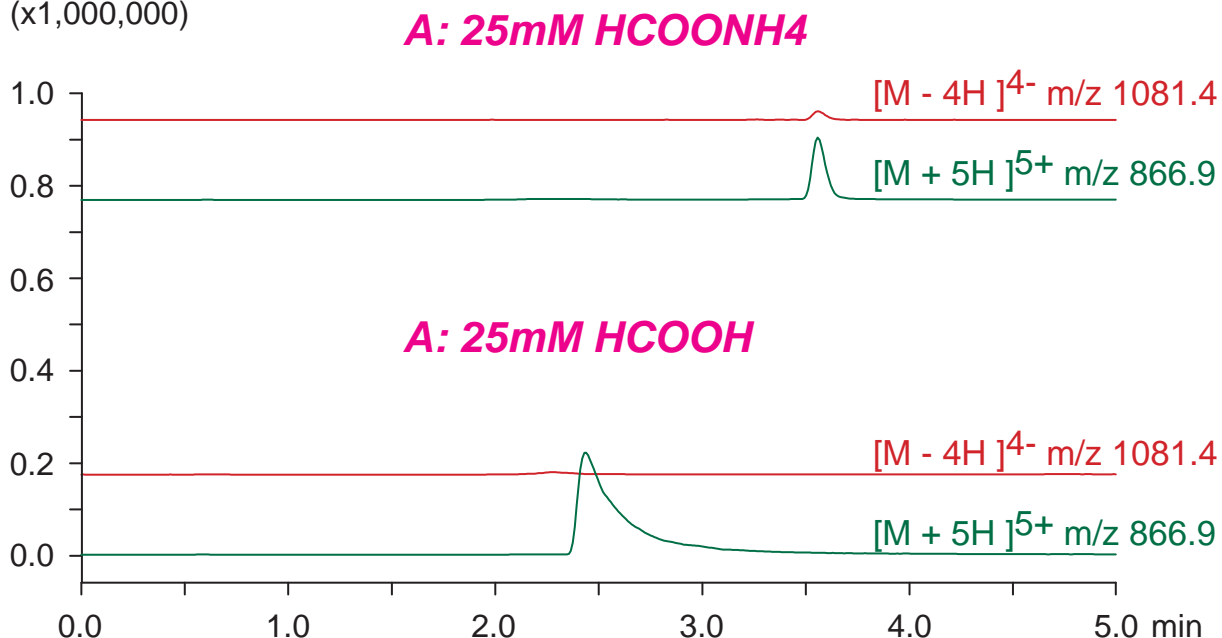
LC-MS: Amyloid beta-peptide [Human, 1-40] (Mobile phase pH)

アミロイド β-ペプチド[Human, 1-40]のLC-MS分析 (pHの影響)

Amyloid beta-peptide
(Human, 1-40)



(x1,000,000)



DACAPO DX-C18, 50 x 2 mm

B: acetonitrile, 0-100 %B (0-5min)

0.2 mL/min (5MPa), 37 °C

1 μL (amyloid peptide 10 μg/mL, DMSO), Single Quad. MS (ESI)