

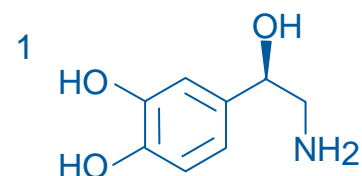
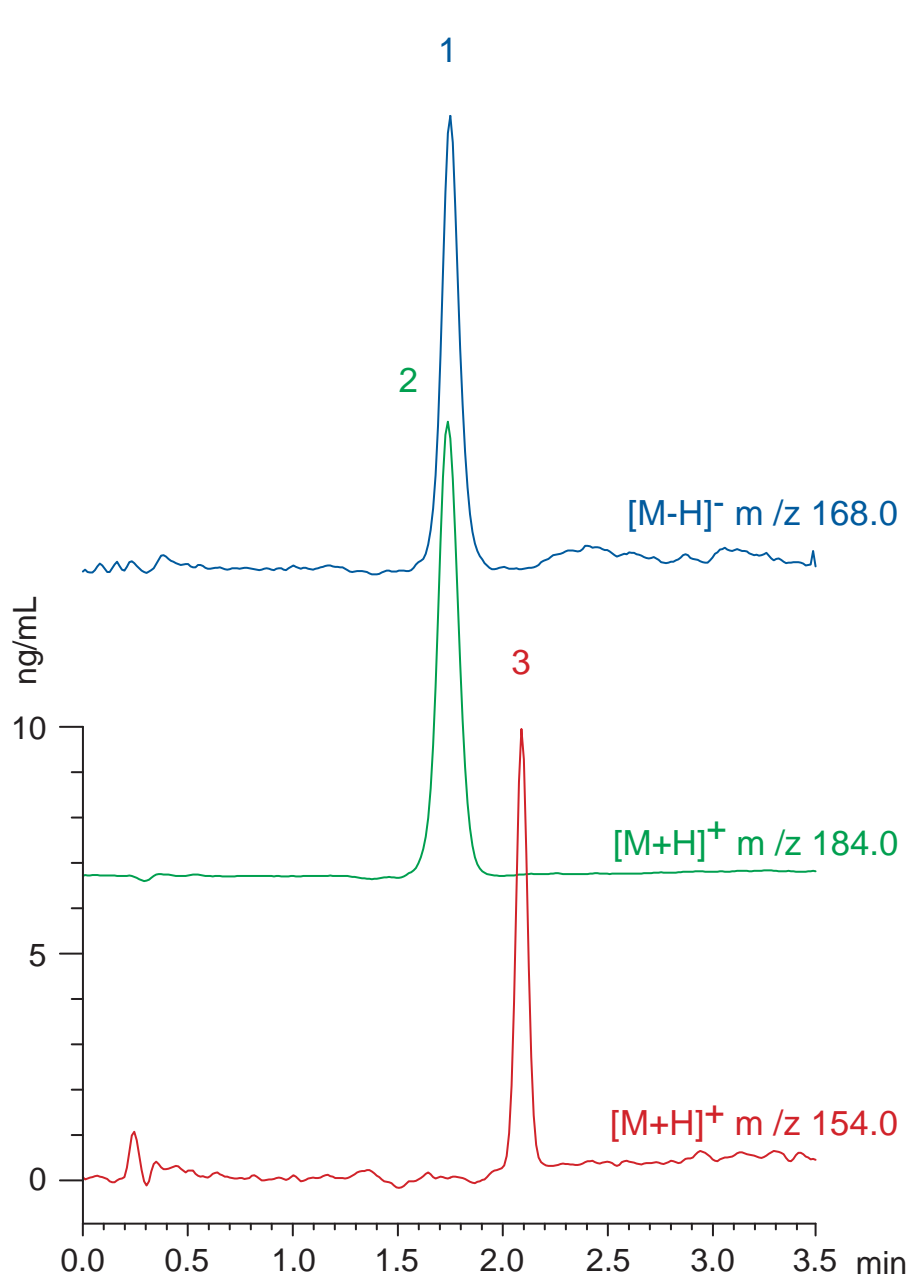
Scherzo SS-C18

30 x 2 mm

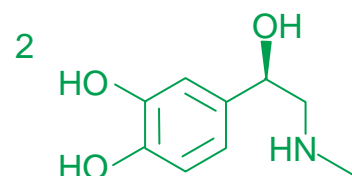
Application

LC-MS: Catecholamines

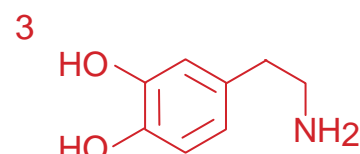
カテコールアミン類のLC-MS分析



L-noradrenaline
(L-norepinephrine)



L-adrenaline
(L-epinephrine)



dopamine

Scherzo SS-C18, 30 x 2 mm

A: methanol / water / formic acid = 35 / 65 / 0.5

B: methanol / 100mM ammonium formate = 40 / 60

5 %B (0-0.5 min), 5-100 %B (0.5-2 min), 100 %B (2-3.5 min)

0.3 mL/min (6 MPa), 37°C, 20 uL (10 ng/mL, 1% HCOOH)

Single Quad. MS (ESI, negative, positive)