

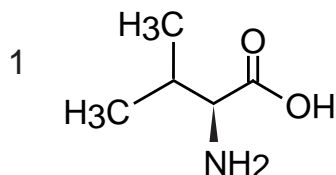
Intrada Amino Acid

150 x 3 mm

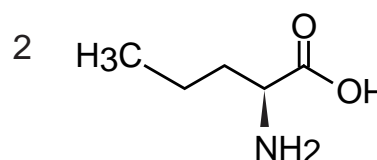
Application

LC-MS: Valine isomers (2)

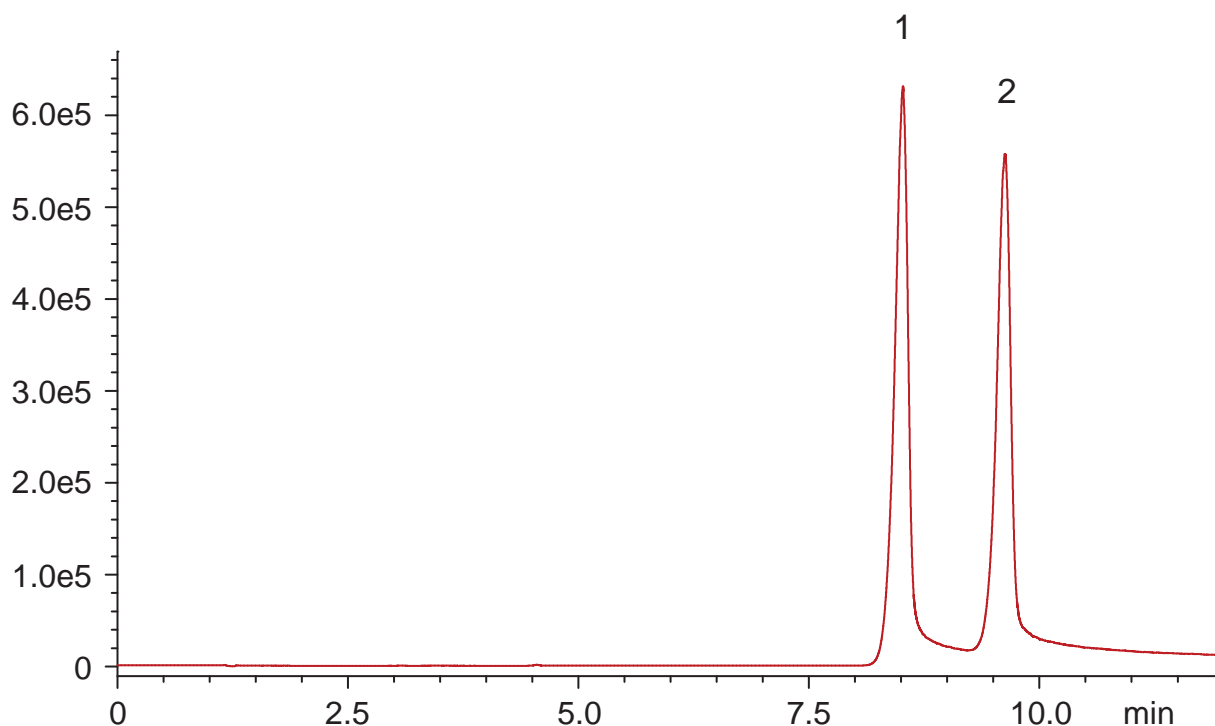
バリン異性体のLC-MS分析(2)



L-valine



L-norvaline



Intrada Amino Acid, 150 x 3 mm

A: water / formic acid = 100 / 0.3

B: methanol / 100mM ammonium formate = 20 / 80

25-35 %B (0-10 min), 100 %B (10-12 min)

0.4 mL/min (10 MPa), 37 deg.C, 5uL (1mM, 0.1N HCl)

Single Quad.MS (ESI, positive, m/z 118.2)