

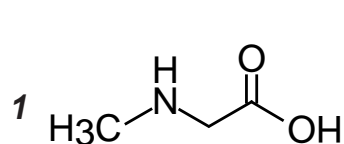
Intrada Amino Acid

100 x 3 mm

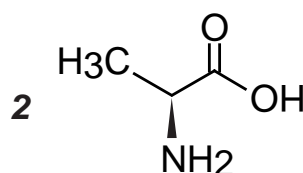
Application

LC-MS: Alanine isomers

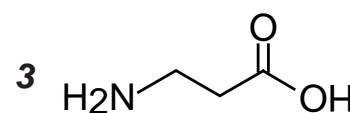
アラニン異性体のLC-MS分析



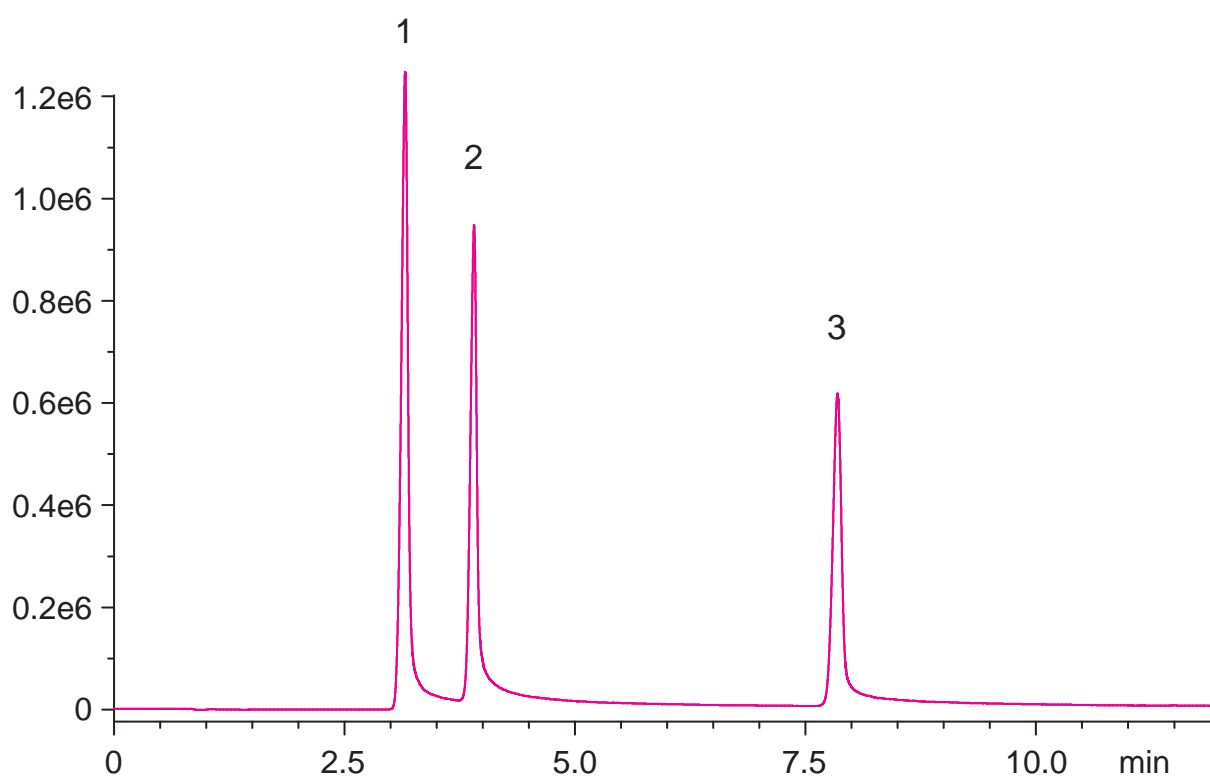
sarcosine



L-alanine



β -alanine



Intrada Amino Acid, 100 x 3 mm
 A: methanol / water / formic acid = 85 / 15 / 0.3
 B: 100mM ammonium formate
 10-60 %B (0-10 min), 100 %B (10-12 min)
 0.4 mL/min (8 MPa), 37°C, 5uL (1mM, 0.1N HCl)
 Single Quad.MS (ESI, Positive, m/z 90.0)