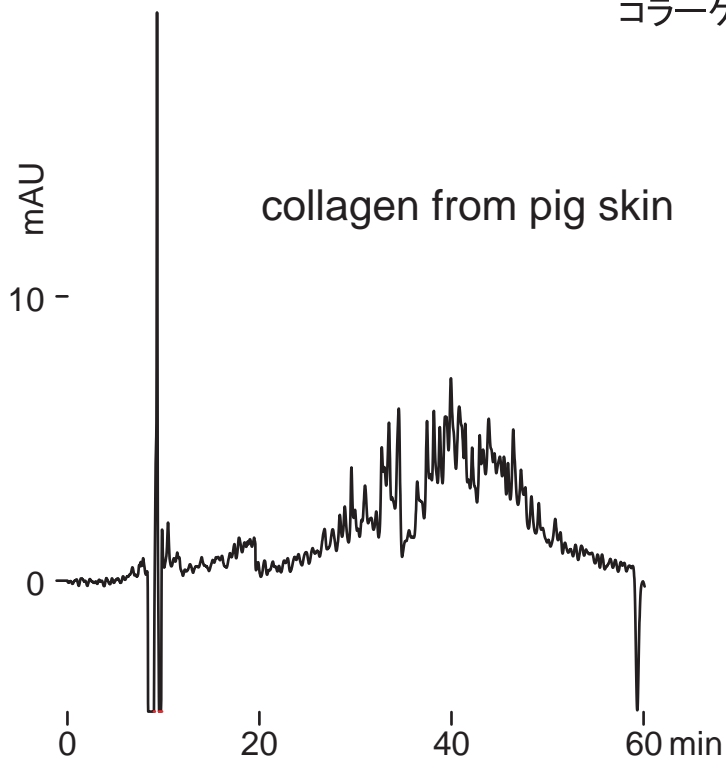


**Intrada WP-RP**  
Presto FF-C18

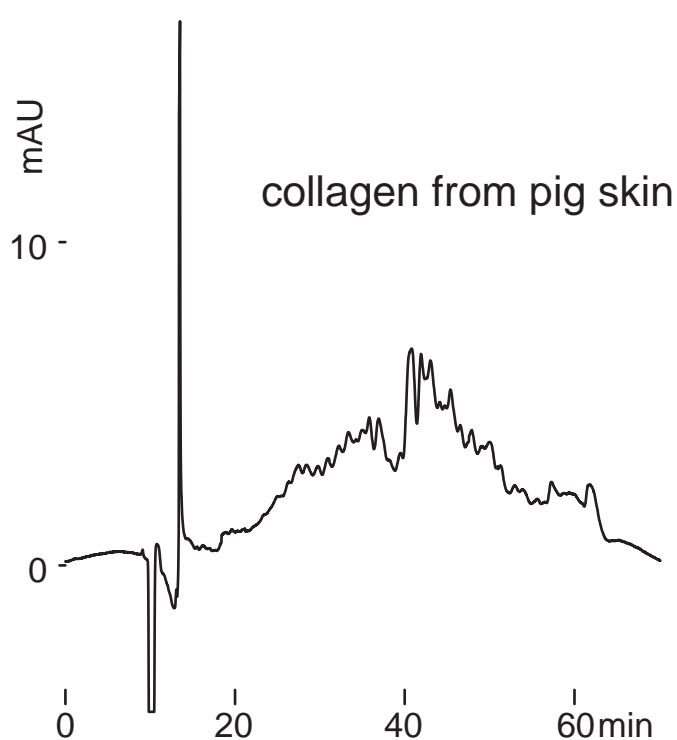
250 x 4.6 mm

Application

**Collagen**  
コラーゲン



**Intrada WP-RP**, 250 x 4.6 mm  
 A: water /trifluoroacetic acid = 100 /0.1  
 B: water /acetonitrile /trifluoroacetic acid = 40 /60 /0.1  
 15-25 %B (0-50min)  
 0.4 mL/min (3MPa), 80 deg.C, 220 nm  
 100 uL (0.01%, 1mM HCl)



**Presto FF-C18**, 250 x 4.6 mm  
 A: water /trifluoroacetic acid = 100 /0.1  
 B: water /acetonitrile /trifluoroacetic acid = 40 /60 /0.1  
 35-45 %B (0-50min)  
 0.15 mL/min (7MPa), 80 deg.C, 220 nm  
 50 uL (0.01%, 1mM HCl)