

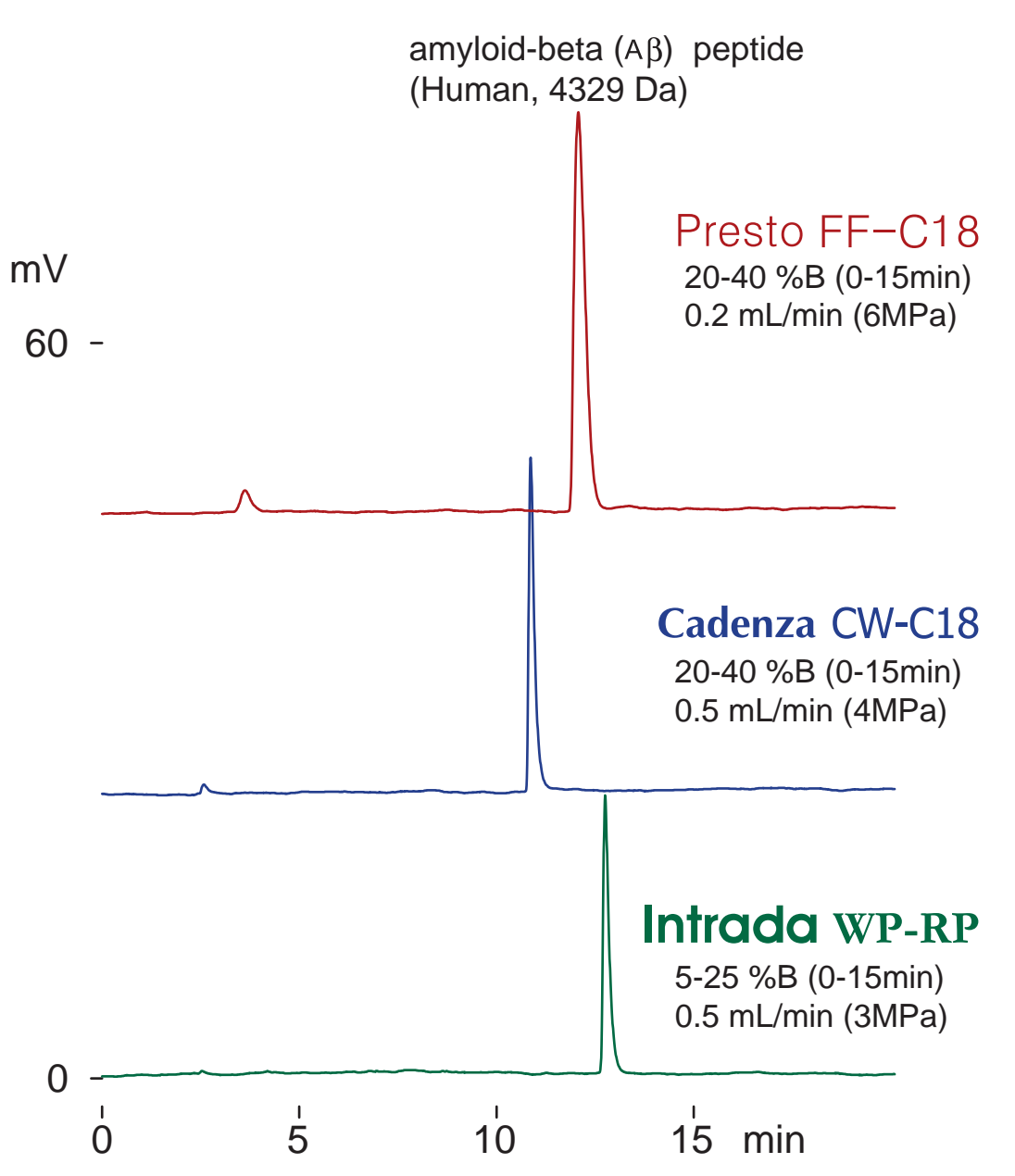
Presto FF-C18
Cadenza CW-C18
Intrada WP-RP

100 x 4.6 mm

Application

amyloid-beta peptide

アミロイド ベータ ペプチド



100 x 4.6 mm

A: water / formic acid = 100 / 0.5

B: acetonitrile / formic acid = 100 / 0.5

37 deg.C

ELSD (spray chamber 35 deg.C, drift tube 70 deg.C)

1.4 μ L (1.4 μ g, DMSO)