

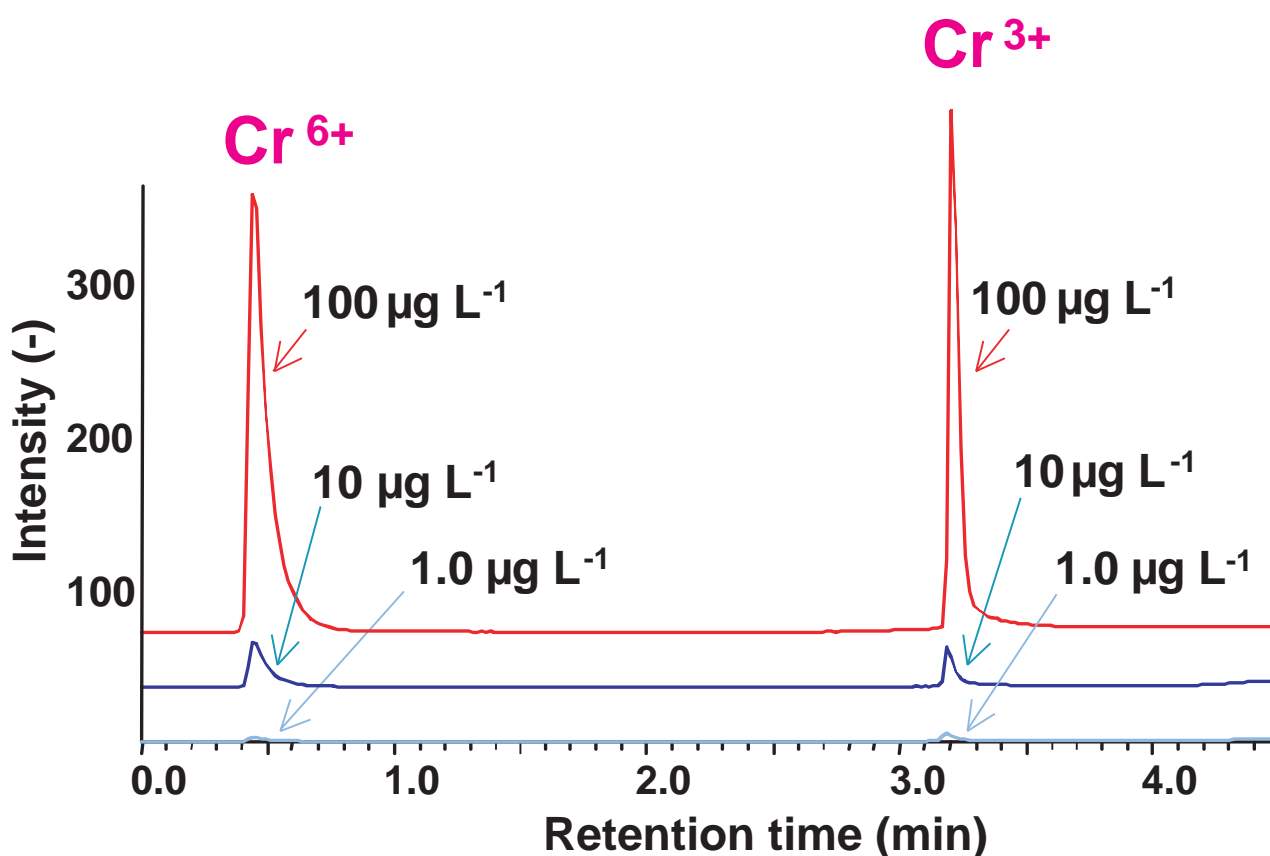
Scherzo SM-C18

50 x 3 mm

Application

LC-ICP-MS analysis of Cr(III) and Cr(VI)

三価クロムと六価クロムのLC-ICP-MS同時分析



Scherzo SM-C18, 50 x 3 mm
 A: phosphoric acid / NaOH (25mM, pH 7)
 B: 100mM phosphoric acid
 0%B (0-1min), 0-100%B (1-4min), 100%B (4-7min)
 1.0 mL/min
 150uL

[ICP-MS]
 ELAN DRC-e (PerkinElmer)
 m/z 52