

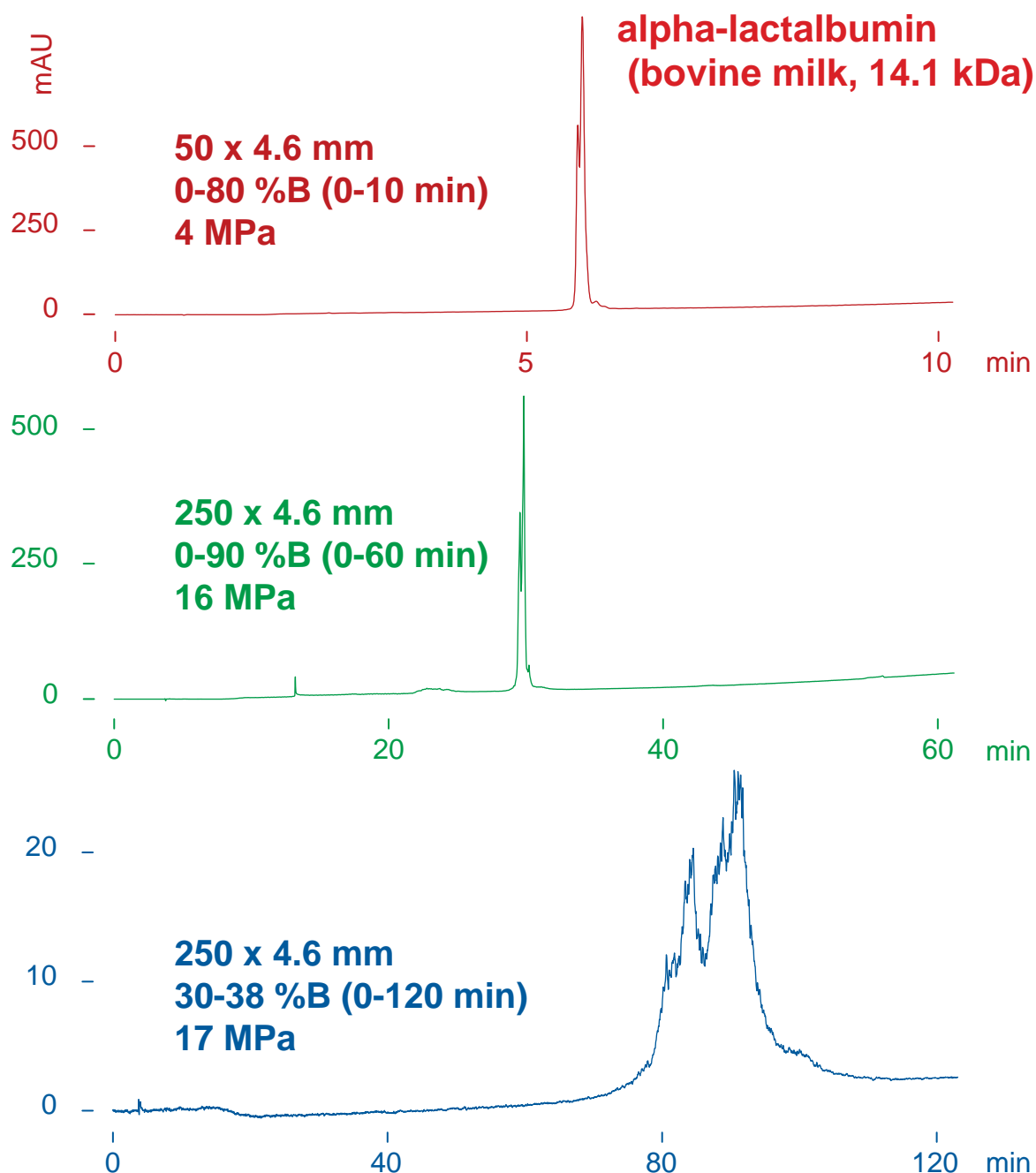
Presto FF-C18

50 x 4.6 mm
250 x 4.6 mm

Application

The effect of gradient slope and column length for alpha-lactalbumin separation

ラクトアルブミンの分離に与えるグラジエント勾配とカラム長さの影響



Presto FF-C18

A: water / trifluoroacetic acid = 100 / 0.1

B: acetonitrile / trifluoroacetic acid = 100 / 0.1

0.4 mL/min, 80 deg.C, 220 nm, 0.4-1.4 uL (4-14 ug)