

Cadenza CW-C18

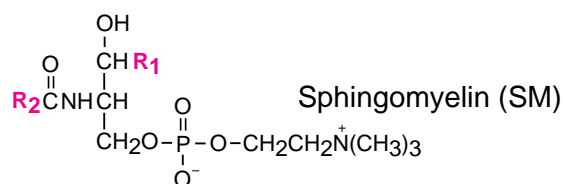
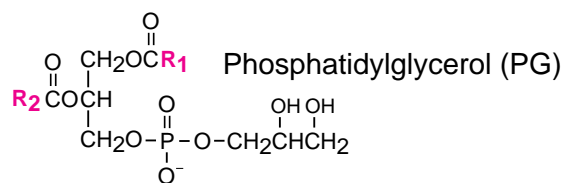
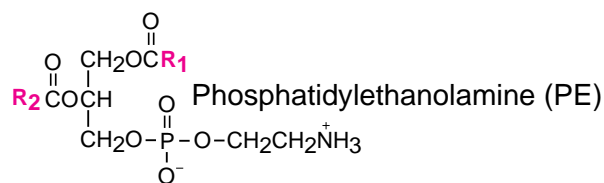
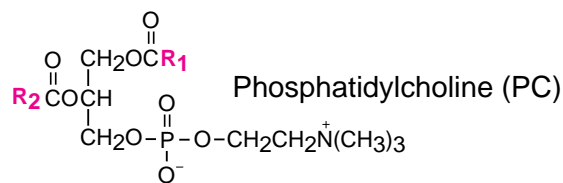
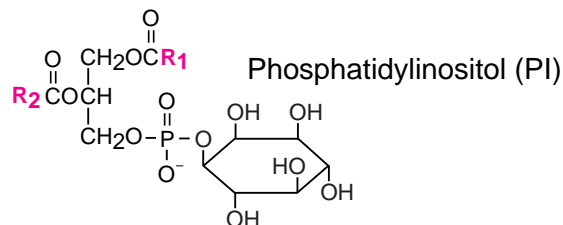
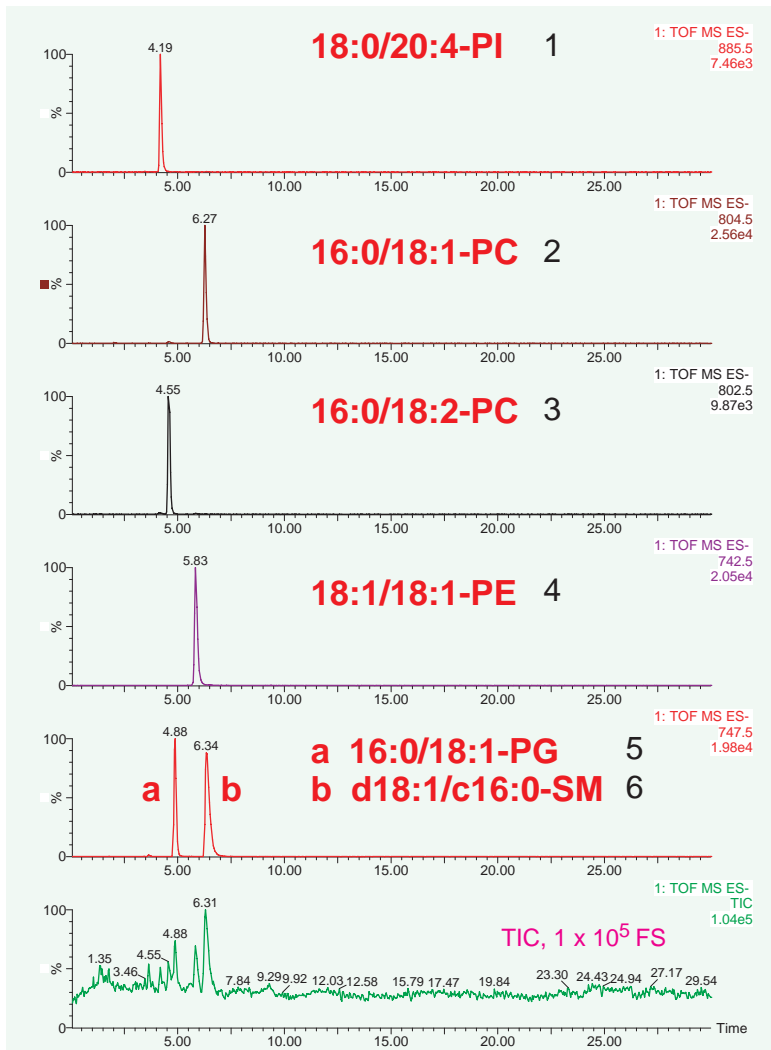
100 x 2 mm

Application

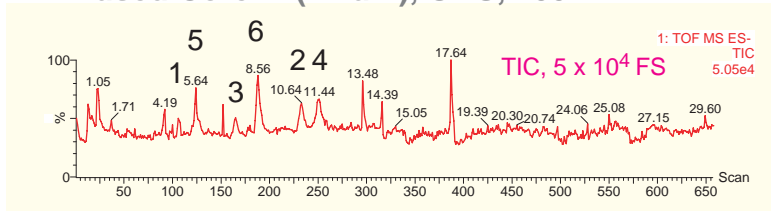
LC-MS application for phospholipids

リン脂質のLC-MS高速分析

Cadenza CW-C18



Fused Core™ (2.7um), ODS, 100 x 2.1 mm



Cadenza CW-C18, 100 x 2 mm
 5mM HCOONH₄ in (acetonitrile / methanol = 1 / 1)
 0.2mL/min, 20deg.C
 ESI-TOFMS, Negative

Courtesy of Yasuko Yoshioka, Inst. Health Biosciences, Univ. of Tokushima, Japan