

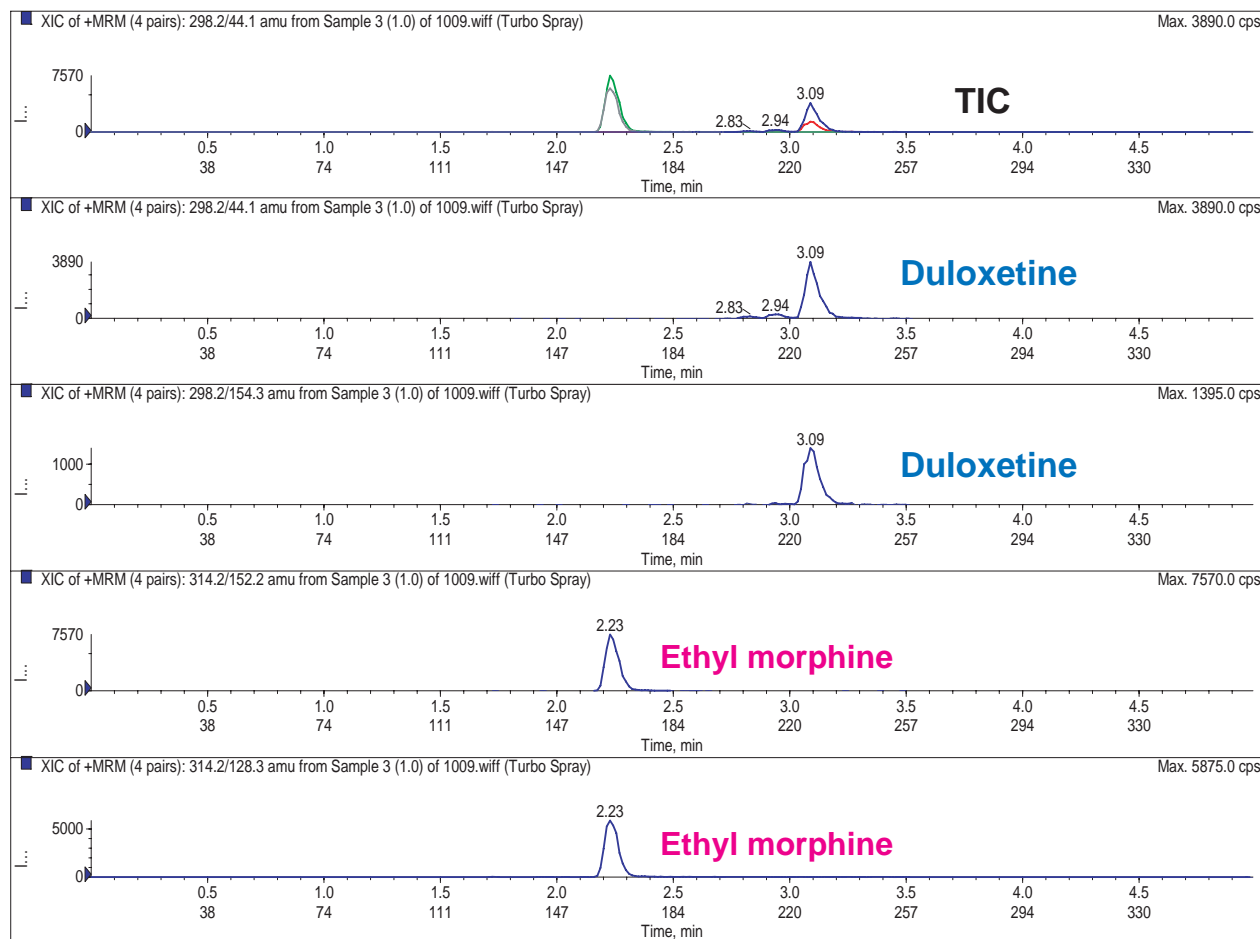
Unison US-C18

50 x 2 mm

Application

LC-MS/MS Application for Duloxetine and Ethyl Morphine in Whole Blood

血液中の麻薬性鎮痛薬と抗うつ剤のLC-MS/MS高速分析



Unison US-C18, 50 x 2 mm

A: 0.1% HCOOH in water, B: 0.1% HCOOH in acetonitrile
 5%B (0-0.5min), 5-90%B (0.5-4.5min), 5%B (4.5-6min)
 0.5mL/min (LOD 0.05 ng/mL, LOQ 0.1 ng/mL)

Whole Blood, SPE Extraction

3200 Q-Trap: ESI, MRM Positive

Duloxetine: m/z 298.1 -> 44.1 and 154.3

Ethyl Morphine (I.S.): m/z 314.2 -> 152.2 and 128.3

Ref) *Rapid Quantification of Duloxetine in Blood and Urine by LC-ESI-MS/MS*
 Albert Elian, Massachusetts State Police Crime Lab, USA
 Society of Forensic Toxicologists (SOFT), 2008, USA

Courtesy of Massachusetts State Police Crime Lab., USA