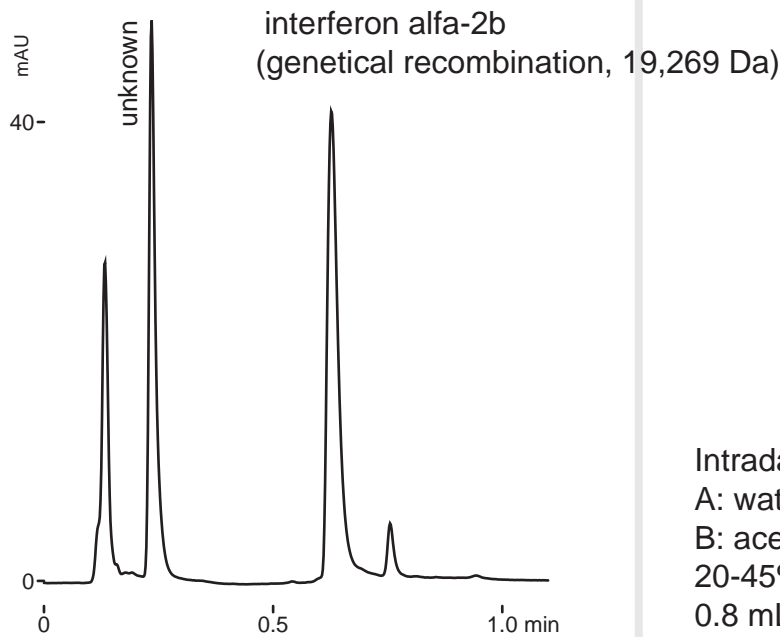


Intrada WP-RP

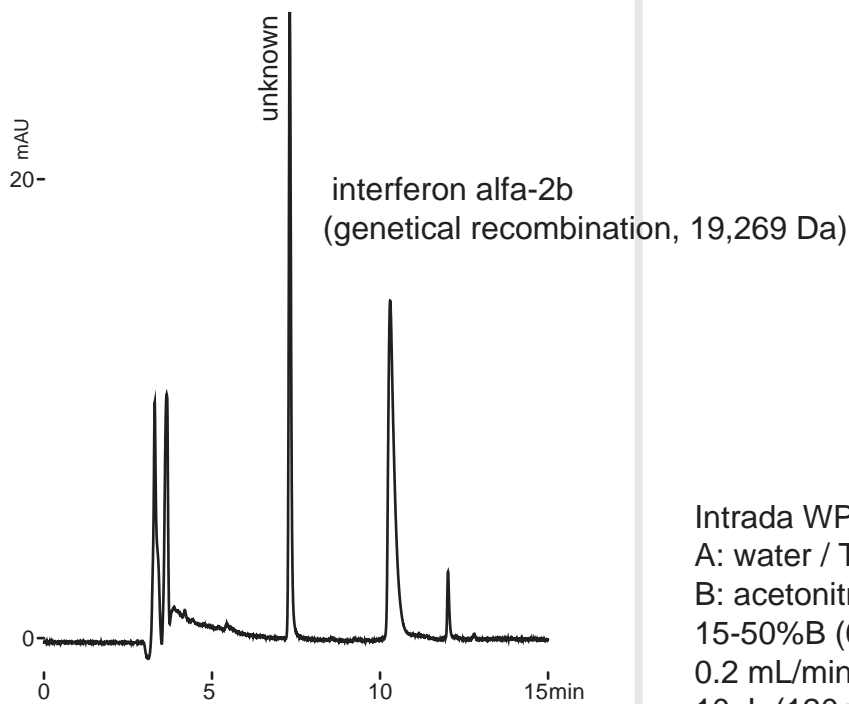
30 x 2 mm
250 x 2 mm

Application

Interferon
インターフェロン



Intrada WP-RP, 30 x 2mm
A: water / TFA = 100 / 0.1
B: acetonitrile / TFA = 100 / 0.07
20-45%B (0-0.5min), 45%B (0.5-1min)
0.8 mL/min(10 MPa), 37deg.C, 280nm
15uL (180ng)



Intrada WP-RP, 250 x 2mm
A: water / TFA = 100 / 0.1
B: acetonitrile / TFA = 100 / 0.07
15-50%B (0-9min), 50%B (9-12min)
0.2 mL/min(13 MPa), 37deg.C, 280nm
10uL (120ng)